

*Prince Salaman Science Oasis, Riyadh*

## KNOWLEDGE OASIS

### *Concept*

Located in the vicinity of a wadi, the Prinz Salman Science Oasis is an exhibition centre focusing on science. In order to allow visitors to experience the special topography of the original desert landscape, the design carefully incorporates the existing structures of the site. In seven exhibition cubes, with the themes earth, water, life, energy and ecology, a universal understanding of the universe is communicated to the visitors.

The incorporation and further development of the existing wadi in terms of open space planning, including plants typical of this area, forms the backbone of the design of the outdoor space. It begins in the north at the King Abdullah Road with the entrance area of the spherical 3-D cinema, which is visible from afar, and has developed organically in a meandering wadi path towards the south.

To the east of the wadi, which can be reached by foot from the main entrance, is the adjacent tree-covered car park. To the west, the science centre with its exhibition cubes meets the exhibition site in the form of an island. A pool forms a natural border.

### *Client*

ARRIYADH DEVELOPMENT AUTHORITY

### *Project period*

2007-2009

### *Size*

43.500 m<sup>2</sup>

### *Type*

EDUCATION AND RESEARCH

### *Location*

RIYADH, SAUDI ARABIA

### *Realisation*

WES LANDSCAPEARCHITECTURE

### *Partner*

GERBER ARCHITEKTEN

### CONTACT

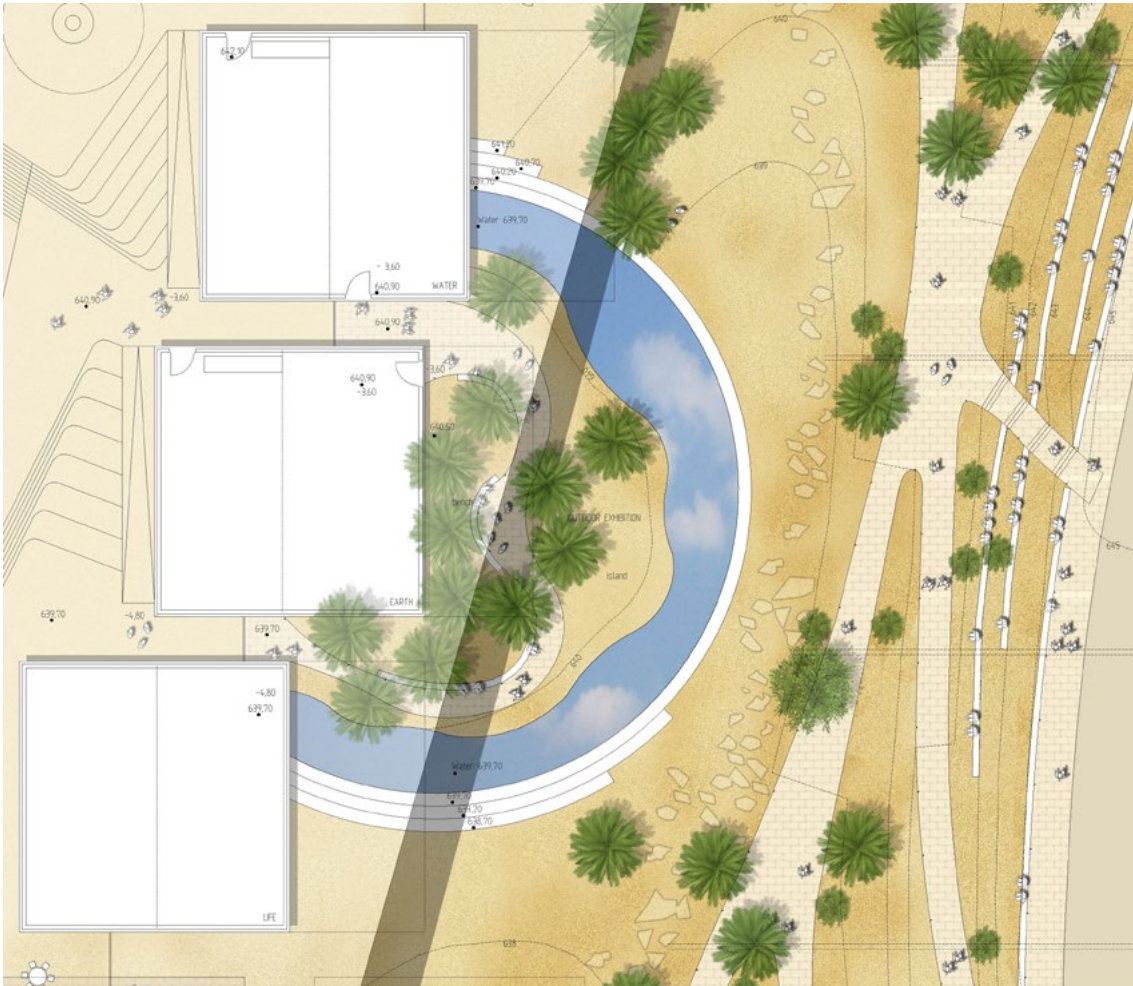
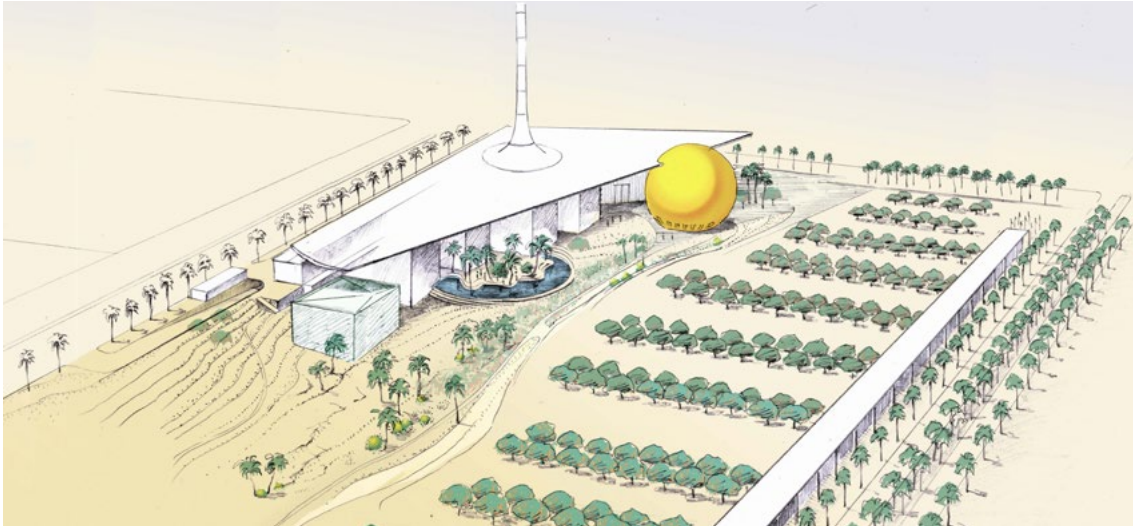
Jarrestraße 80  
22303 Hamburg  
Germany

Telephone +49 (0) 40 2 78 41-0  
Telefax +49 (0) 40 270 66 68  
hamburg@wes-la.de

### FOR MORE INFORMATION AND PRESS MATERIAL

Telephone +49 (0) 40 2 78 41-153  
Telefax +49 (0) 40 270 66 68  
pr@wes-la.de

Project Images



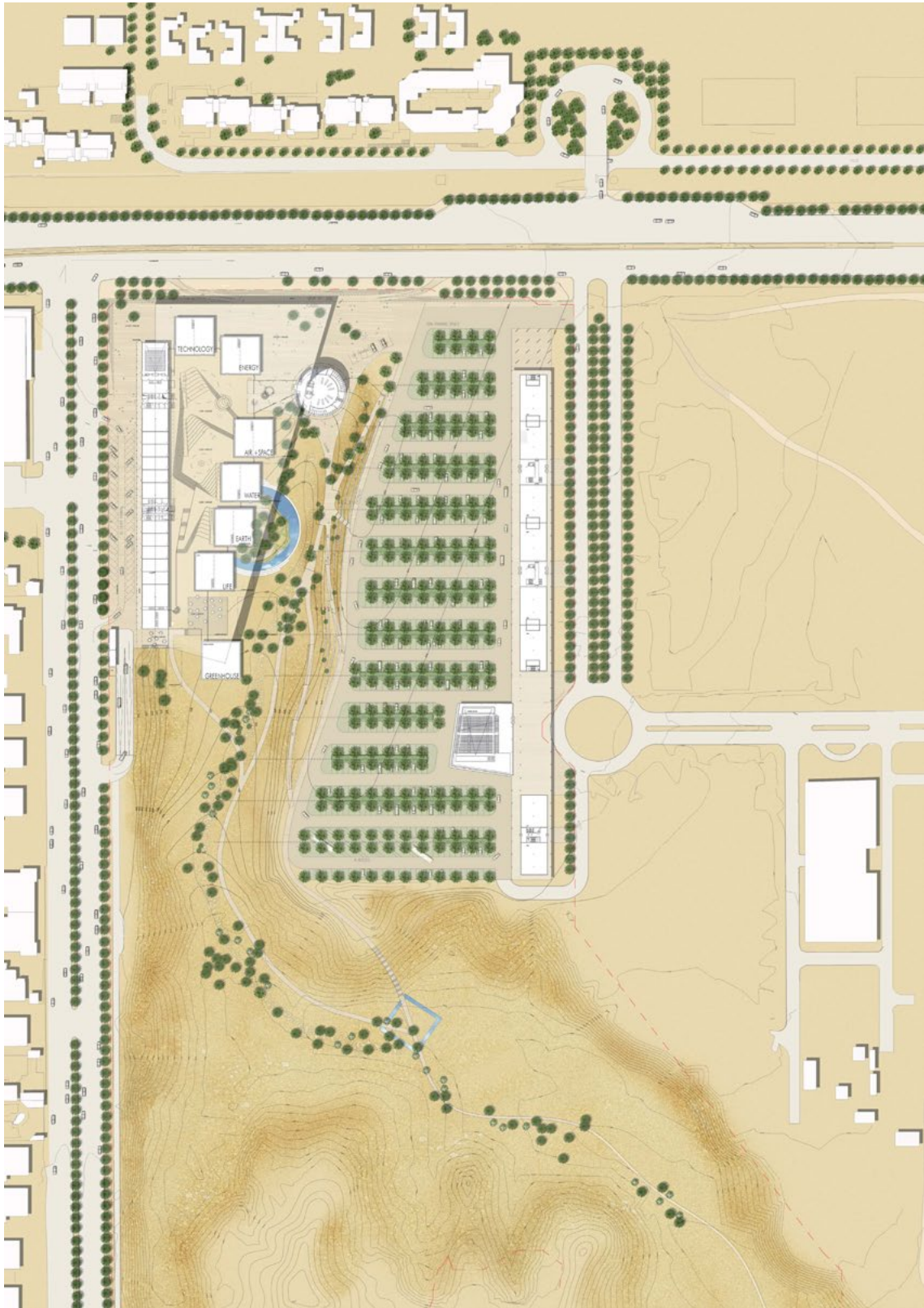
CONTACT

Jarrestraße 80  
22303 Hamburg  
Germany

Telephone +49 (0) 40 2 78 41-0  
Telefax +49 (0) 40 270 66 68  
hamburg@wes-la.de

FOR MORE INFORMATION AND PRESS MATERIAL

Telephone +49 (0) 40 2 78 41-153  
Telefax +49 (0) 40 270 66 68  
pr@wes-la.de



## CONTACT

Jarrestraße 80  
22303 Hamburg  
Germany

Telephone +49 (0) 40 2 78 41-0  
Telefax +49 (0) 40 270 66 68  
hamburg@wes-la.de

## FOR MORE INFORMATION AND PRESS MATERIAL

Telephone +49 (0) 40 2 78 41-153  
Telefax +49 (0) 40 270 66 68  
pr@wes-la.de

Project Images



CONTACT

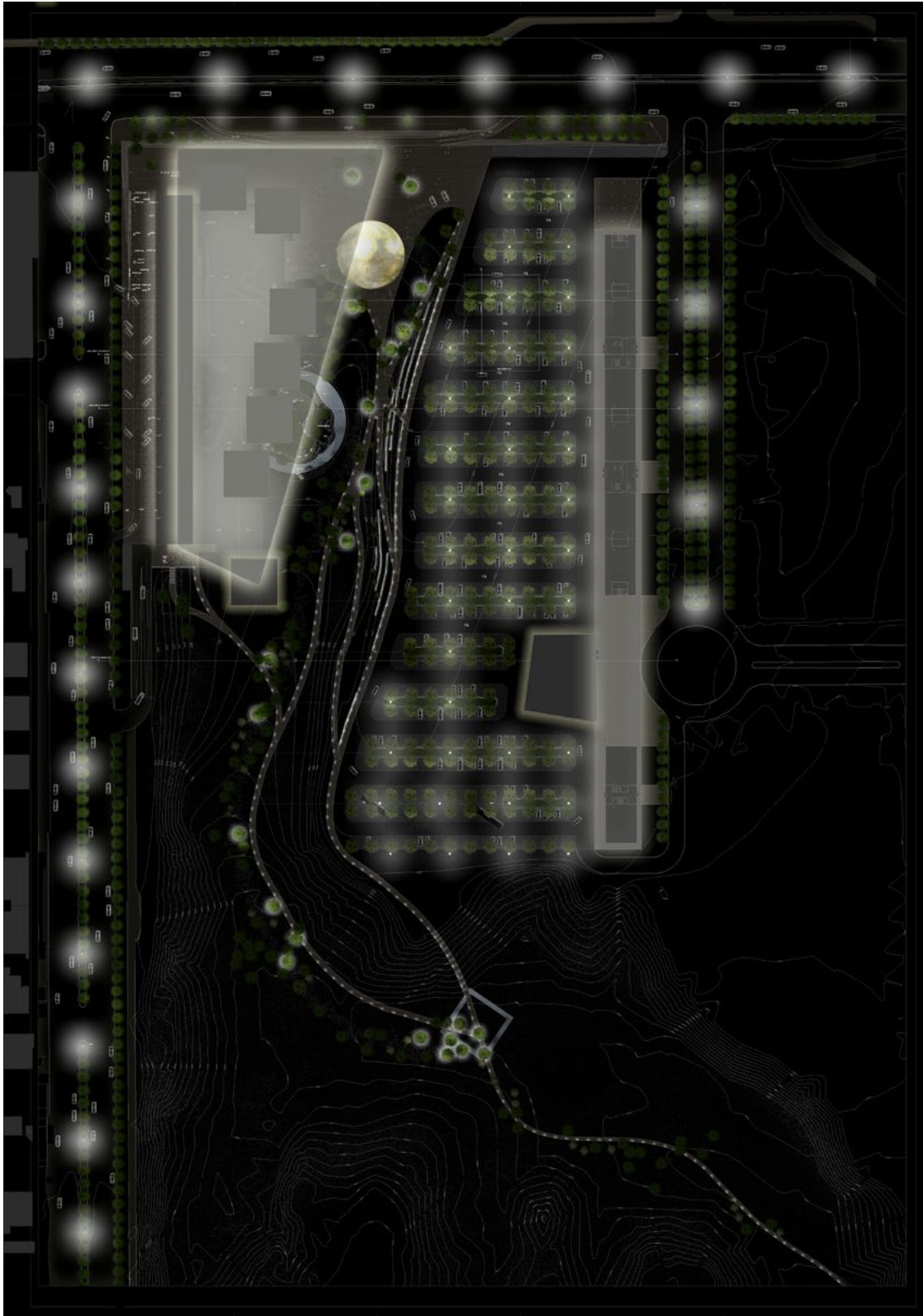
Jarrestraße 80  
22303 Hamburg  
Germany

Telephone +49 (0) 40 2 78 41-0  
Telefax +49 (0) 40 270 66 68  
hamburg@wes-la.de

FOR MORE INFORMATION AND PRESS MATERIAL

Telephone +49 (0) 40 2 78 41-153  
Telefax +49 (0) 40 270 66 68  
pr@wes-la.de

Project Images



CONTACT

Jarrestraße 80  
22303 Hamburg  
Germany

Telephone +49 (0) 40 2 78 41-0  
Telefax +49 (0) 40 270 66 68  
hamburg@wes-la.de

FOR MORE INFORMATION AND PRESS MATERIAL

Telephone +49 (0) 40 2 78 41-153  
Telefax +49 (0) 40 270 66 68  
pr@wes-la.de

## *Legal notice*

WES GmbH  
LandschaftsArchitektur (LandscapeArchitecture)

### Managing Shareholders:

Peter Schatz  
Wolfgang Betz  
Michael Kaschke  
Henrike Wehberg-Krafft  
Claus Rödding

District court Hamburg HRB 100420

Person responsible for content according to  
§ 55 Abs. 2 RStV: Wolfgang Betz (address as above)

The rules of professional conduct are specified in:

- (1) Chamber of Construction Law Hamburg  
(BauKaG HH)
- (2) Implementing regulations for Chamber of  
Construction Law (DVO BauKaG HH)
- (3) Main statute of Hamburg Chamber of Architects

The professional regulations can be viewed and  
accessed via the website of the Hamburg Chamber of  
Architects [www.akhh.de](http://www.akhh.de) / Section: Recht (legal issues).

The legal occupational title "Landschaftsarchitekt"  
(landscape architect) was awarded to WES & Partner  
GbR in Germany following their entzhhhhry in the list  
of architects of the Hamburg Chamber of Architects.

Hamburgische Architektenkammer  
(Hamburg Chamber of Architects)  
Grindelhof 40  
20146 Hamburg  
Telephone: +49 (0)40 441841-0  
Telefax: +49 (0)40 441841-44  
[info@akhh.de](mailto:info@akhh.de)  
[www.akhh.de](http://www.akhh.de)

## *Copyright*

The contents and works produced by the site operator  
are subject to German copyright laws. The duplication,  
editing, distribution and any kind of use beyond what  
is permitted by the copyright laws requires written  
authorisation from the respective author or content  
creator.

## *Image rights*

WES GmbH LandscapeArchitecture owns the unlimi-  
ted usage rights and non-exclusive rights for all of the  
image material that appears in this document.

In the context of the use of the external image material  
we are exempt from any claims by third parties. WES  
GmbH LandscapeArchitecture is not liable for images  
provided by the project partners.

By providing image material, the project partners  
avouch that they have unrestricted use of the image  
material, that it is not subject to rights by third parties,  
the persons pictured consent to the publication and  
that no fees must be paid for this.

## *Links to photographers*

Site plan + Sketches:  
WES LandschaftsArchitektur  
[www.wes-la.de](http://www.wes-la.de)

## CONTACT

Jarrestraße 80  
22303 Hamburg  
Germany

Telephone +49 (0) 40 2 78 41-0  
Telefax +49 (0) 40 270 66 68  
[hamburg@wes-la.de](mailto:hamburg@wes-la.de)

## FOR MORE INFORMATION AND PRESS MATERIAL

Telephone +49 (0) 40 2 78 41-153  
Telefax +49 (0) 40 270 66 68  
[pr@wes-la.de](mailto:pr@wes-la.de)