



Autostadt Wolfsburg

YIN AND YANG

Concept

In contrast to the layers of construction in the north and south, which are characterised by calm, structured linear aspects (Yin), the park emanates a lively, creative ambience (Yang). Based on the principle of a Japanese garden, the landscape is consolidated, rich in contrast, and figurative.

The very individually designed brand pavilions are situated in this landscape. The solitary alignment of the pavilions in the garden allow for a maximum development of the architecture. The landscape is the connective element. Due to the alternation of water and land, the strongest image that nature has to offer, it is possible to provide an excellent location for each pavilion.

The topography flows around the buildings, both incorporating them and demarcating them. The homogeneous plantings of pine trees with tall trunks strengthens the common theme of the park and disguises how close the buildings are to one another. As the communication platform for the Volkswagen enterprise, the Autostadt in Wolfsburg makes the concern's values, as well as all the different facets of the theme mobility, tangible under the motto "People, cars and what moves them". The approximately 28 hectare park and lagoon landscape provides a setting for diverse attractions.

Since the opening of the Autostadt in 2000, WES has provided continuous support in the optimisation of the park for events, as well as the structural and landscape supplementations – always taking care to maintain the balance between architecture and landscape.

Client

VOLKSWAGEN AG
AUTOSTADT GMBH

Project period

SINCE 1997

Size

280.000 m²

Type

EXHIBITIONS & LEISURE

Location

WOLFSBURG, GERMANY

Competition

1. PRIZE, 1997

Realisation

WES & PARTNER

WES LANDSCHAFTSARCHITEKTUR

Partner

HENN ARCHITEKTEN, MÜNCHEN

CONTACT

Jarrestraße 80
22303 Hamburg
Germany

Telephone +49 (0) 40 2 78 41-0
Telefax +49 (0) 40 270 66 68
hamburg@wes-la.de

FOR MORE INFORMATION AND PRESS MATERIAL

Telephone +49 (0) 40 2 78 41-153
Telefax +49 (0) 40 270 66 68
pr@wes-la.de

Publications

Book / Dissertation „**Corporate Landscape**“

Author: Nicole Uhrig

Wissenschaftlicher Verlag Berlin, 2012

Magazine „Merian Extra: Autostadt in Wolfsburg“ **Von der Kohlehalde zur Boomtown**

Authors: Martin Tschechne + Manfred Bissinger

Jahreszeiten Verlag, 6/3.2010

Book **Erlkönig/Prototypes**

Publisher: Autostadt GmbH

DuMont Buchverlag, 2009

Book **Bodenbeläge im Freiraum**

Authors: Günter Mader + Elke Zimmermann

Deutsche Verlags-Anstalt (DVA), 2009

Book **Wolfsburg: Die Stadt**

Authors: Simone Neteler + Birgit Schneider-Bönninger

Appelhans Verlag, 2009

Touring exhibition **Typisch Wolfsburg! Vom Werden einer neuen Stadt. 1938 - 2008**

Deutsches Architekturzentrum (DAZ)

Phæno Wolfsburg, 2006 + Deutsches Architekturzentrum (DAZ) Berlin, 2008

Book **Avant Gardeners**

Authors: Tim Richardson + Martha Schwartz

Thames & Hudson Ltd London (UK), 2008

Trade journal "International New Landscape" (CN) **Magical Lighting Landscape**

China Int. Book Trading Corp (CN), 1.2007

Touring exhibition **5 German landscape architects**

Goethe Institut Peking und Aedes Berlin

Goethe Institut Peking (CN) und Aedes Berlin, 2005

Book **Handgezeichnete Visionen: Eine Sammlung aus deutschen Architekturbüros**

Author: Jonathan Andrews

Verlagshaus Braun, 2004

Trade journal „Garten + Landschaft“ **Lichtkonzepte Wolfsburg: Autostadt im Lichterglanz**

Author: Gesa Loschwitz

Callwey Verlag, 2.2001

Trade journal „Garten + Landschaft“ **Autostadt Wolfsburg**

Author: Robert Schäfer

Callwey Verlag, 8.2000

Trade journal „LA Landschaftsarchitektur“ **Autoträume: Sanfte Hügel und große Kiefern.**

Author: Imma Schmidt

Callwey Verlag, 6.2000

Book **Zwischenzeit – Zwischenraum**

Authors: Thomas Huber, Julian Opie + Hinnerk Wehberg

Kulturdezernat der Stadt Wolfsburg, 2000

CONTACT

Jarrestraße 80
22303 Hamburg
Germany

Telephone +49 (0) 40 2 78 41-0
Telefax +49 (0) 40 270 66 68
hamburg@wes-la.de

FOR MORE INFORMATION AND PRESS MATERIAL

Telephone +49 (0) 40 2 78 41-153
Telefax +49 (0) 40 270 66 68
pr@wes-la.de

Publications

Daily newspaper „Wolfsburger Allgemeine Zeitung“ **Autostadt: Volkswagen ist ein großer Wurf gelungen**
Madsack GmbH & Co. KG, 16.05.2000

Trade journal „Bauwelt“ **Infotainment in Wolfsburg. Das VW-Großprojekt „Autostadt“**
Author: Dietmar Brandenburger
Bauverlag BV, 17 + 18.1998

Awards

1. international award winner LES VICTOIRES DU PAYSAGE 2014
French horticulture association Val'Hor

CONTACT

Jarrestraße 80
22303 Hamburg
Germany

Telephone +49 (0) 40 2 78 41-0
Telefax +49 (0) 40 270 66 68
hamburg@wes-la.de

FOR MORE INFORMATION AND PRESS MATERIAL

Telephone +49 (0) 40 2 78 41-153
Telefax +49 (0) 40 270 66 68
pr@wes-la.de

Project Images



CONTACT

Jarrestraße 80
22303 Hamburg
Germany

Telephone +49 (0) 40 2 78 41-0
Telefax +49 (0) 40 270 66 68
hamburg@wes-la.de

FOR MORE INFORMATION AND PRESS MATERIAL

Telephone +49 (0) 40 2 78 41-153
Telefax +49 (0) 40 270 66 68
pr@wes-la.de

Project Images



CONTACT

Jarrestraße 80
22303 Hamburg
Germany

Telephone +49 (0) 40 2 78 41-0
Telefax +49 (0) 40 270 66 68
hamburg@wes-la.de

FOR MORE INFORMATION AND PRESS MATERIAL

Telephone +49 (0) 40 2 78 41-153
Telefax +49 (0) 40 270 66 68
pr@wes-la.de

Project Images



CONTACT

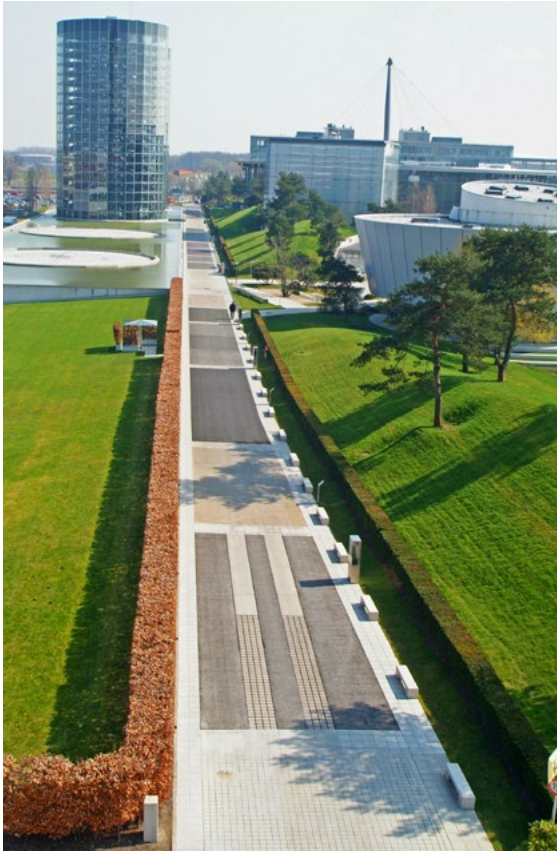
Jarrestraße 80
22303 Hamburg
Germany

Telephone +49 (0) 40 2 78 41-0
Telefax +49 (0) 40 270 66 68
hamburg@wes-la.de

FOR MORE INFORMATION AND PRESS MATERIAL

Telephone +49 (0) 40 2 78 41-153
Telefax +49 (0) 40 270 66 68
pr@wes-la.de

Project Images



CONTACT

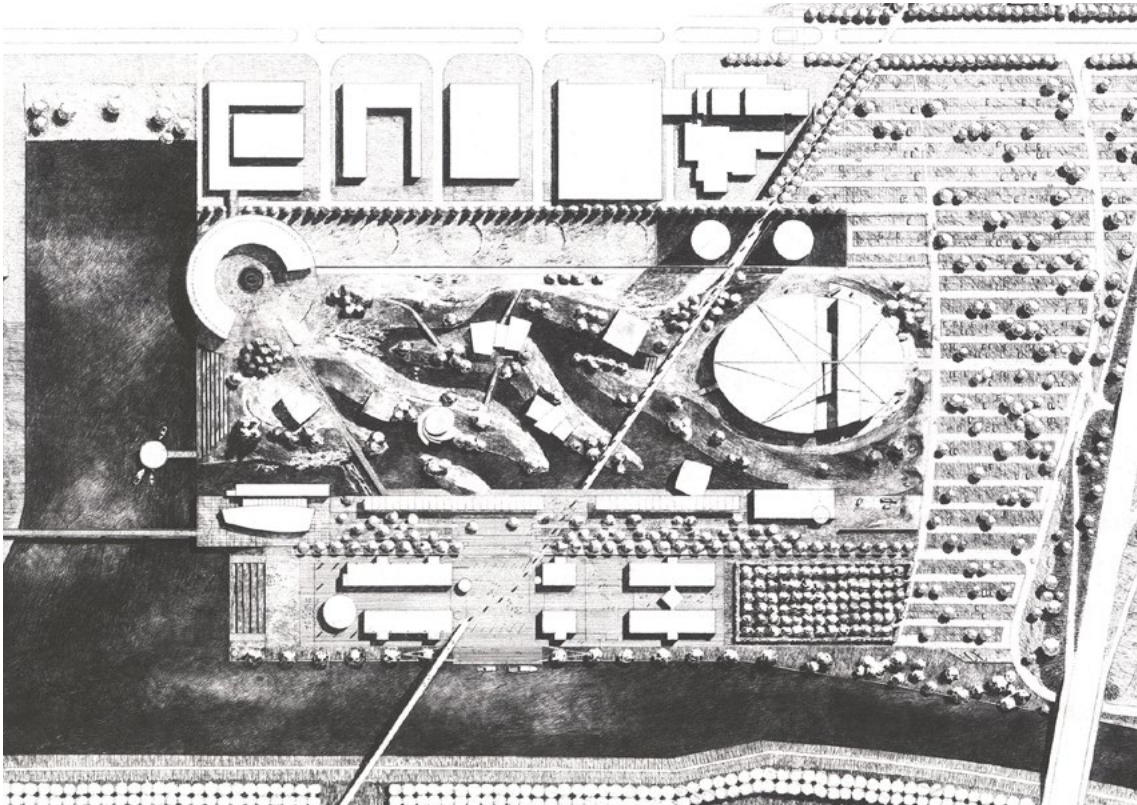
Jarrestraße 80
22303 Hamburg
Germany

Telephone +49 (0) 40 2 78 41-0
Telefax +49 (0) 40 270 66 68
hamburg@wes-la.de

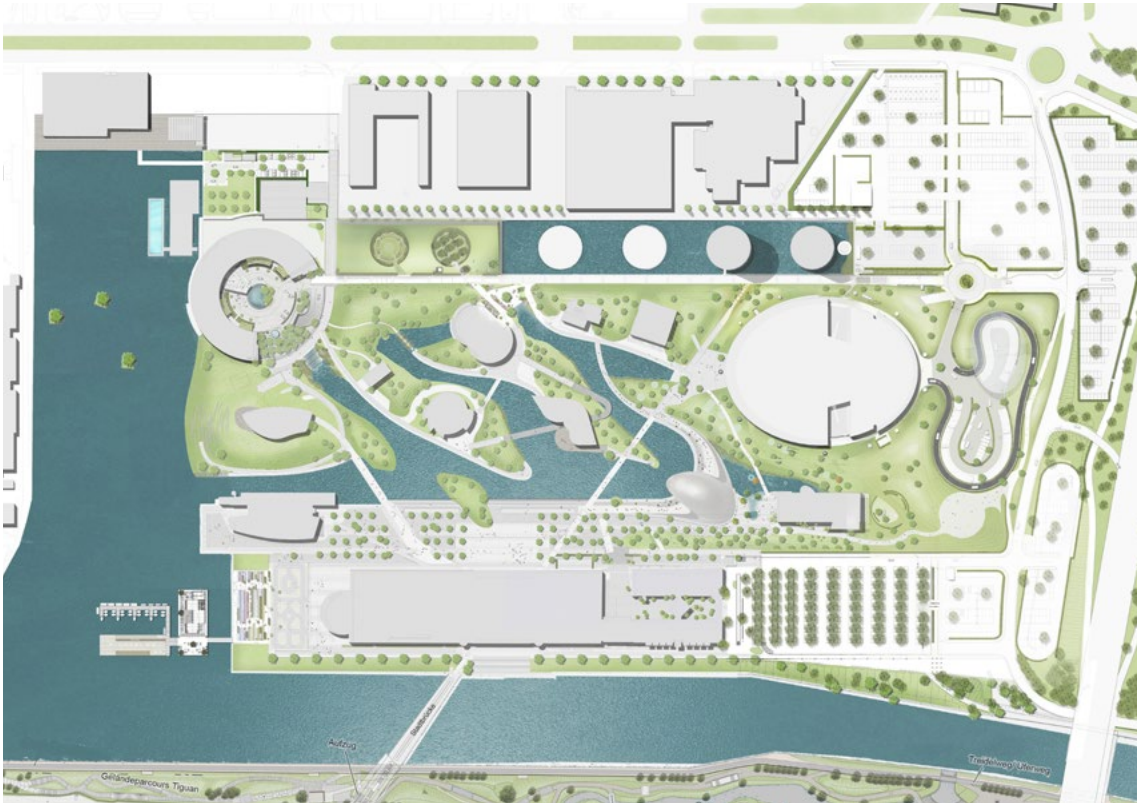
FOR MORE INFORMATION AND PRESS MATERIAL

Telephone +49 (0) 40 2 78 41-153
Telefax +49 (0) 40 270 66 68
pr@wes-la.de

Project Images
Year 2000



Year 2019



CONTACT

Jarrestraße 80
22303 Hamburg
Germany

Telephone +49 (0) 40 2 78 41-0
Telefax +49 (0) 40 270 66 68
hamburg@wes-la.de

FOR MORE INFORMATION AND PRESS MATERIAL

Telephone +49 (0) 40 2 78 41-153
Telefax +49 (0) 40 270 66 68
pr@wes-la.de

Legal notice

WES GmbH
LandschaftsArchitektur (LandscapeArchitecture)

Managing Shareholders:

Peter Schatz
Wolfgang Betz
Michael Kaschke
Henrike Wehberg-Krafft
Claus Rödding

District court Hamburg HRB 100420

Person responsible for content according to
§ 55 Abs. 2 RStV: Wolfgang Betz (address as above)

The rules of professional conduct are specified in:

- (1) Chamber of Construction Law Hamburg
(BauKaG HH)
- (2) Implementing regulations for Chamber of
Construction Law (DVO BauKaG HH)
- (3) Main statute of Hamburg Chamber of Architects

The professional regulations can be viewed and
accessed via the website of the Hamburg Chamber of
Architects www.akhh.de / Section: Recht (legal issues).

The legal occupational title "Landschaftsarchitekt"
(landscape architect) was awarded to WES & Partner
GbR in Germany following their entry in the list of ar-
chitects of the Hamburg Chamber of Architects.

Hamburgische Architektenkammer
(Hamburg Chamber of Architects)
Grindelhof 40
20146 Hamburg
Telephone: +49 (0)40 441841-0
Telefax: +49 (0)40 441841-44
info@akhh.de
www.akhh.de

Copyright

The contents and works produced by the site operator
are subject to German copyright laws. The duplication,
editing, distribution and any kind of use beyond what
is permitted by the copyright laws requires written
authorisation from the respective author or content
creator.

Image rights

WES GmbH LandscapeArchitecture owns the unlimi-
ted usage rights and non-exclusive rights for all of the
image material that appears in this document.

In the context of the use of the external image material
we are exempt from any claims by third parties. WES
GmbH LandscapeArchitecture is not liable for images
provided by the project partners.

By providing image material, the project partners
avouch that they have unrestricted use of the image
material, that it is not subject to rights by third parties,
the persons pictured consent to the publication and
that no fees must be paid for this.

Links to photographers

Marion Beckhäuser for Autostadt GmbH
www.marionbeckhaeuser.de

Rainer Jensen for Autostadt GmbH
www.rainerjensen.de

Jörg Modrow for Autostadt GmbH
www.modrowgrafie.de

Nils Hendrik Müller for Autostadt GmbH
www.nilshendrikson.de

Marc-Oliver Schulz for Autostadt GmbH
www.moschulz.de

Matthias Leitzke
www.photodesign-wolfsburg.de

Frank Thiel for Autostadt GmbH

Lagepläne: WES & Partner,
WES LandschaftsArchitektur
www.wes-la.de

CONTACT

Jarrestraße 80
22303 Hamburg
Germany

Telephone +49 (0) 40 2 78 41-0
Telefax +49 (0) 40 270 66 68
hamburg@wes-la.de

FOR MORE INFORMATION AND PRESS MATERIAL

Telephone +49 (0) 40 2 78 41-153
Telefax +49 (0) 40 270 66 68
pr@wes-la.de