



Platz der Einheit, Potsdam

CITATION AND ALIENATION

Concept

The draft reflects the multifaceted history of the plaza: the linden tree quadrate, the Linné-style diagonal intersection of paths and the strange story about the sinking of the square, as well as the concept of the „Bornimer Kreis“, have a reference in the form of shrubs as Hommage à Foerster.

The seemingly inordinate position of the large so-phoras planted in the 1970s results from the design of the square during the GDR era. The draft includes two existing monuments: the "Memorial to the Victims of Fascism and Militarism" and the "Memorial for the Unknown Deserter".

And all of this combined in a powerful, sculptural area of green area!

„The design for the Platz der Einheit is captivating due to its great simplicity and clarity“ was the verdict of Alexander Otto (Chairman of the board of trustees of the foundation "Lebendige Stadt") and Dr. Andreas Mattner (foundation chairman of the board).

Client

CITY OF POTSDAM
SANIERUNGSTRÄGER POTSDAM
GESELLSCHAFT DER BEHUTSAMEN STADTERNEUERUNG MBH, POTSDAM

Project period

1997-1998

Size

21.000 m²

Type

PUBLIC SPACES & SQUARES

Location

POTSDAM, GERMANY

Competition

1. PRIZE, 1997

Realisation

WES & PARTNER

Partner

KSP JÜRGEN ENGEL ARCHITECTS, FRANKFURT/MAIN

CONTACT

Jarrestraße 80
22303 Hamburg
Germany

Telephone +49 (0) 40 2 78 41-0
Telefax +49 (0) 40 270 66 68
hamburg@wes-la.de

FOR MORE INFORMATION AND PRESS MATERIAL

Telephone +49 (0) 40 2 78 41-153
Telefax +49 (0) 40 270 66 68
pr@wes-la.de

Publications

Magazin folia **Prospettiva in diagonale**

Author: Giovanni Busolini

March 2011

Trade journal Garten + Landschaft **Potsdamer Plätze**

Author: Almut Jirku

Georg D.W. Callwey GmbH & Co. KG, Juni 2007

Book **New Landscape Architecture**

Author: Nicolette Baumeister

Braun Publishers, 2007

Book **Neue Landschaftsarchitektur; Deutschland Österreich Schweiz**

Author: Nicolette Baumeister

Braun Publishers, 2006

Book **Stadtplätze: Architektur und Freiraumplanung**

Author: Jürgen Knirsch

Alexander Koch Publishers, 2004

Book **Die Neuen Architekturführer, Sammelband Nr.4**

Author: Nikolaus Bernau

Stadtwandelverlag Berlin, 2004

Exhibition **WES & Partner. Landscape architects**

Genoa showroom for contemporary architecture and art, Genua, 2004-2005

Touring Exhibition **Freiraum als Ressource**

Landeshauptstadt Hannover, DGGL sowie BDLA, 2002/2003

Award

Foundation Award „Gestaltung städtischer Plätze“

Stiftung Lebendige Stadt, 2001

CONTACT

Jarrestraße 80
22303 Hamburg
Germany

Telephone +49 (0) 40 2 78 41-0
Telefax +49 (0) 40 270 66 68
hamburg@wes-la.de

FOR MORE INFORMATION AND PRESS MATERIAL

Telephone +49 (0) 40 2 78 41-153
Telefax +49 (0) 40 270 66 68
pr@wes-la.de

Project Images



CONTACT

Jarrestraße 80
22303 Hamburg
Germany

Telephone +49 (0) 40 2 78 41-0
Telefax +49 (0) 40 270 66 68
hamburg@wes-la.de

FOR MORE INFORMATION AND PRESS MATERIAL

Telephone +49 (0) 40 2 78 41-153
Telefax +49 (0) 40 270 66 68
pr@wes-la.de

Project Images



CONTACT

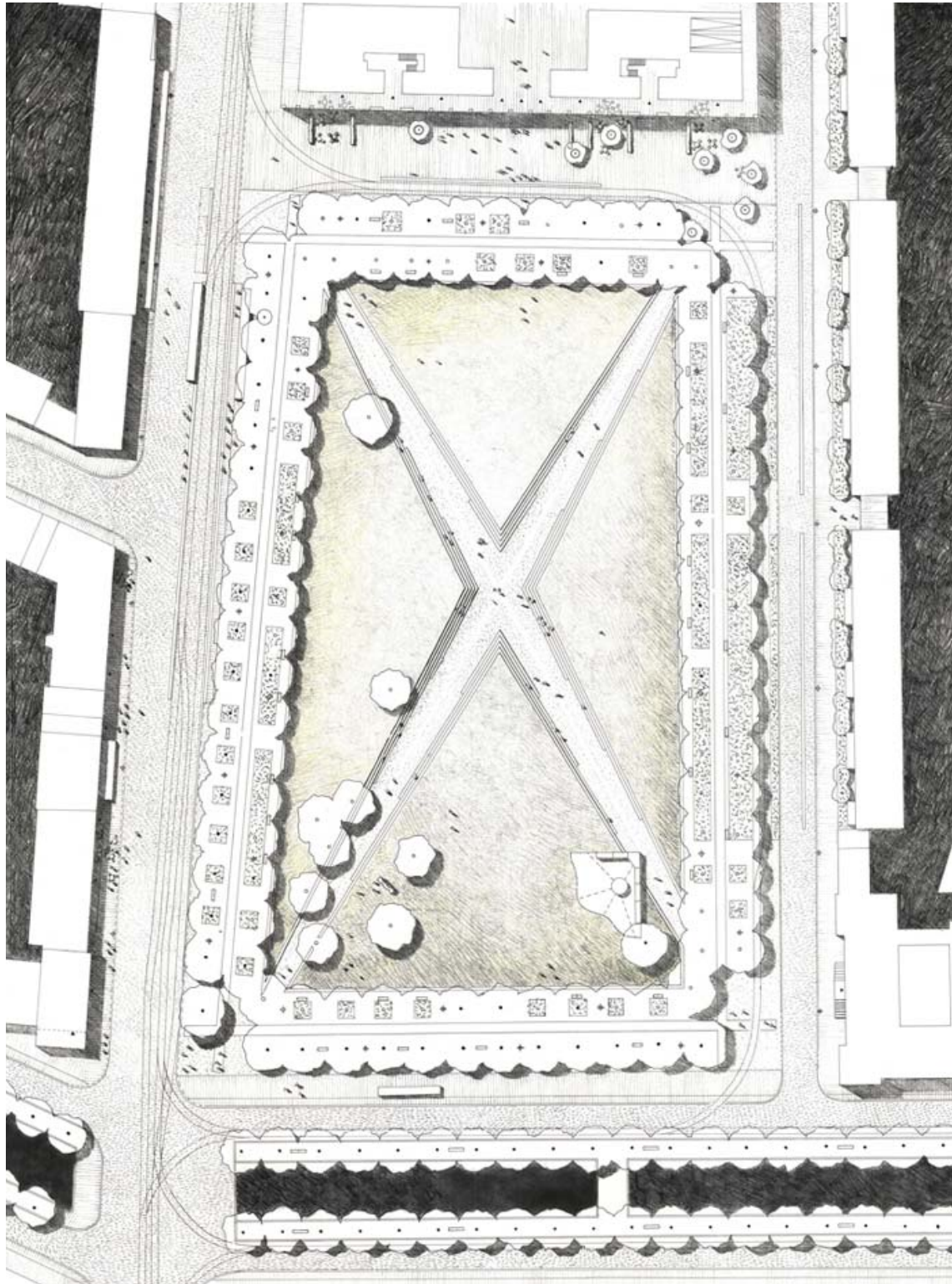
Jarrestraße 80
22303 Hamburg
Germany

Telephone +49 (0) 40 2 78 41-0
Telefax +49 (0) 40 270 66 68
hamburg@wes-la.de

FOR MORE INFORMATION AND PRESS MATERIAL

Telephone +49 (0) 40 2 78 41-153
Telefax +49 (0) 40 270 66 68
pr@wes-la.de

Project Images



CONTACT

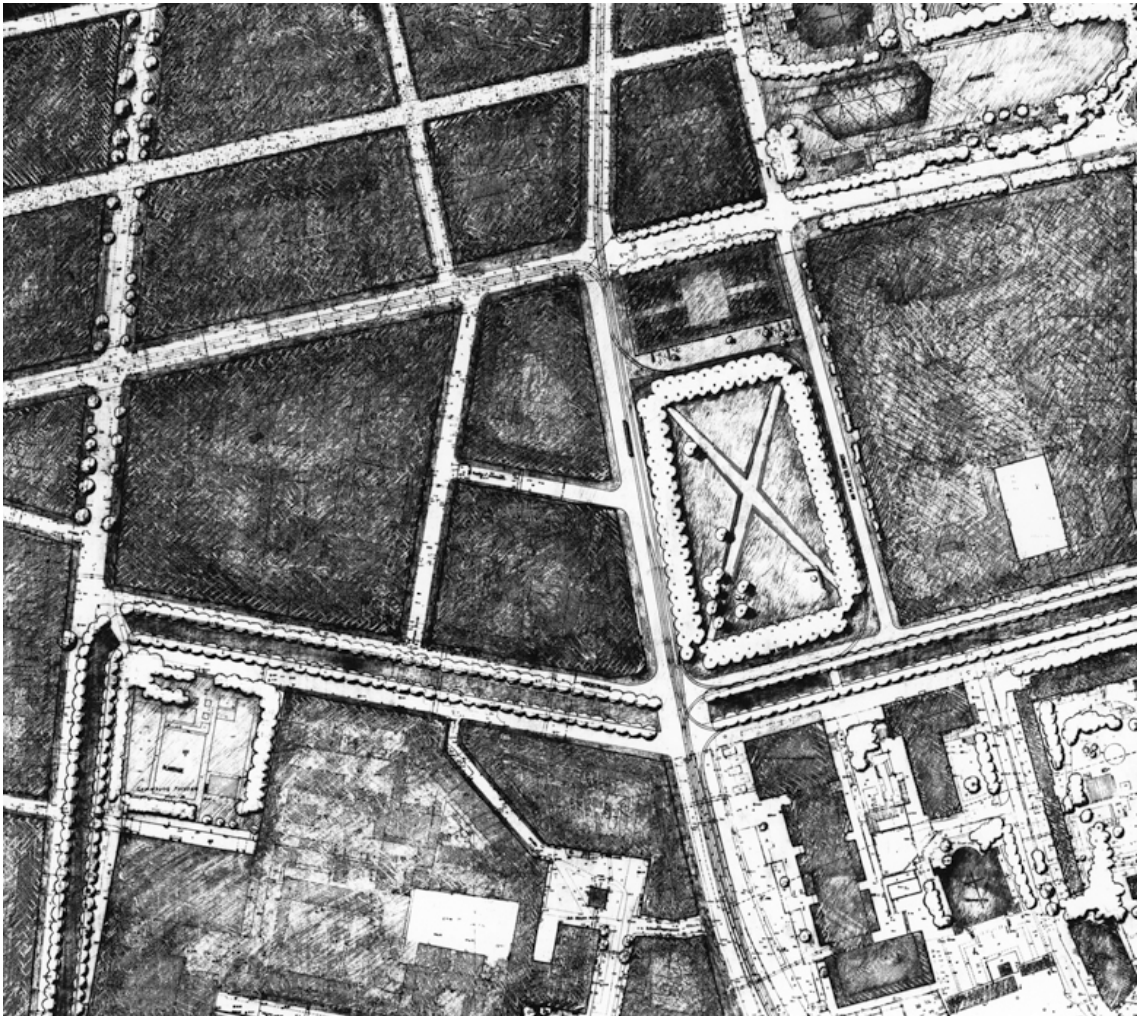
Jarrestraße 80
22303 Hamburg
Germany

Telephone +49 (0) 40 2 78 41-0
Telefax +49 (0) 40 270 66 68
hamburg@wes-la.de

FOR MORE INFORMATION AND PRESS MATERIAL

Telephone +49 (0) 40 2 78 41-153
Telefax +49 (0) 40 270 66 68
pr@wes-la.de

Project Images



CONTACT

Jarrestraße 80
22303 Hamburg
Germany

Telephone +49 (0) 40 2 78 41-0
Telefax +49 (0) 40 270 66 68
hamburg@wes-la.de

FOR MORE INFORMATION AND PRESS MATERIAL

Telephone +49 (0) 40 2 78 41-153
Telefax +49 (0) 40 270 66 68
pr@wes-la.de

Legal notice

WES GmbH
LandschaftsArchitektur (LandscapeArchitecture)

Managing Shareholders:

Peter Schatz
Wolfgang Betz
Michael Kaschke
Henrike Wehberg-Krafft

Managing Director:
Claus Rödding

District court Hamburg HRB 100420

Person responsible for content according to
§ 55 Abs. 2 RStV: Wolfgang Betz (address as above)

The rules of professional conduct are specified in:

- (1) Chamber of Construction Law Hamburg
(BauKaG HH)
- (2) Implementing regulations for Chamber of
Construction Law (DVO BauKaG HH)
- (3) Main statute of Hamburg Chamber of Architects

The professional regulations can be viewed and
accessed via the website of the Hamburg Chamber of
Architects www.akhh.de / Section: Recht (legal issues).

The legal occupational title "Landschaftsarchitekt"
(landscape architect) was awarded to WES & Partner
GbR in Germany following their entry in the list of ar-
chitects of the Hamburg Chamber of Architects.

Hamburgische Architektenkammer
(Hamburg Chamber of Architects)
Grindelhof 40
20146 Hamburg
Telephone: +49 (0)40 441841-0
Telefax: +49 (0)40 441841-44
info@akhh.de
www.akhh.de

Copyright

The contents and works produced by the site operator
are subject to German copyright laws. The duplication,
editing, distribution and any kind of use beyond what
is permitted by the copyright laws requires written
authorisation from the respective author or content
creator.

Image rights

WES GmbH LandscapeArchitecture owns the unlimi-
ted usage rights and non-exclusive rights for all of the
image material that appears in this document.

In the context of the use of the external image material
we are exempt from any claims by third parties. WES
GmbH LandscapeArchitecture is not liable for images
provided by the project partners.

By providing image material, the project partners
avouch that they have unrestricted use of the image
material, that it is not subject to rights by third parties,
the persons pictured consent to the publication and
that no fees must be paid for this.

Links to photographers

Alexander Paul Brandes
www.alexanderpaulbrandes.com

Photos + sketches: WES LandschaftsArchitektur
www.wes-la.de

CONTACT

Jarrestraße 80
22303 Hamburg
Germany

Telephone +49 (0) 40 2 78 41-0
Telefax +49 (0) 40 270 66 68
hamburg@wes-la.de

FOR MORE INFORMATION AND PRESS MATERIAL

Telephone +49 (0) 40 2 78 41-153
Telefax +49 (0) 40 270 66 68
pr@wes-la.de