



Country house garden near Lüneburg

VIEW OF GREENERY

Concept

An outdated orchard, two fish ponds surrounded by willows, and a site that slopes steeply down towards a stream, however with an unobstructed view of the landscape of Lüneburg: these were the theme-based "finds" that inspired the garden design. The clients specified that they would like the design to be puristical like the modern country house with its two outbuildings, spacious and representative, however also easy to maintain without external help.

As a result, an entrée was created, which cited a Japanese garden framed by hedges and disguised the difference in height in comparison to the street, a linden tree, all interspersed with hydrangeas. The counterpart to the garden is formed by a large terrace with wooden flooring, which provides a view across the garden into the countryside.

The topography was selectively revised. The large fish pond, which was also a bathing lake, was shifted more in view of the terrace by means of an inclining lawn while a wooden terrace by the water was transformed into a bathing jetty. The excavated earth was piled up to form an entrenchment or an earth sculpture, crowned with a rondel of hedges as a potential location for an observatory. The existing trees were selectively pruned and the view into the surrounding landscape was given a framework. The meadow was accentuated with early-blooming crocus blossoms and by selective mowing, it has become an ever-changing scenery in front of the living spaces.

Client

PRIVATE CLIENT

Project period *Size*

1997-2000 5.875 m²

Type

PARKS & GARDENS

Location

LÜNEBURG, GERMANY

Competition

Realisation

WES & PARTNER

Partner

GMP ARCHITEKTEN
VON GERKAN, MARG UND PARTNER, HAMBURG
MAXIE STRAUCH,
LANDSCHAFTSARCHITEKTIN, HAMBURG

CONTACT

Jarrestraße 80
22303 Hamburg
Germany

Telephone +49 (0) 40 2 78 41-0
Telefax +49 (0) 40 270 66 68
hamburg@wes-la.de

FOR MORE INFORMATION AND PRESS MATERIAL

Telephone +49 (0) 40 2 78 41-153
Telefax +49 (0) 40 270 66 68
pr@wes-la.de

Publications

Book **Moderne Gärten**

Author: Elke von Radziewsky

Callwey Verlag, 2009

Awards

1. Prize Die schönsten Hausgärten Zeitschrift HÄUSER, 2004

CONTACT

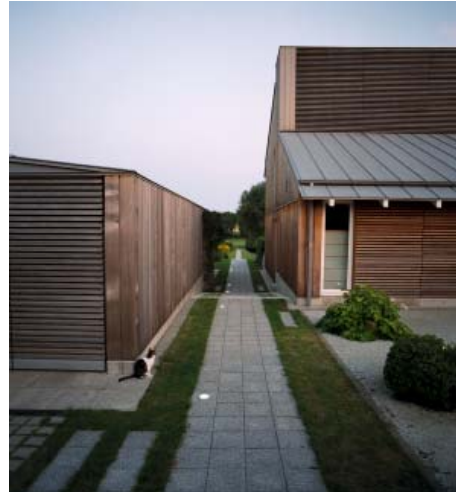
Jarrestraße 80
22303 Hamburg
Germany

Telephone +49 (0) 40 2 78 41-0
Telefax +49 (0) 40 270 66 68
hamburg@wes-la.de

FOR MORE INFORMATION AND PRESS MATERIAL

Telephone +49 (0) 40 2 78 41-153
Telefax +49 (0) 40 270 66 68
pr@wes-la.de

Project Images



CONTACT

Jarrestraße 80
22303 Hamburg
Germany

Telephone +49 (0) 40 2 78 41-0
Telefax +49 (0) 40 270 66 68
hamburg@wes-la.de

FOR MORE INFORMATION AND PRESS MATERIAL

Telephone +49 (0) 40 2 78 41-153
Telefax +49 (0) 40 270 66 68
pr@wes-la.de

Project Images



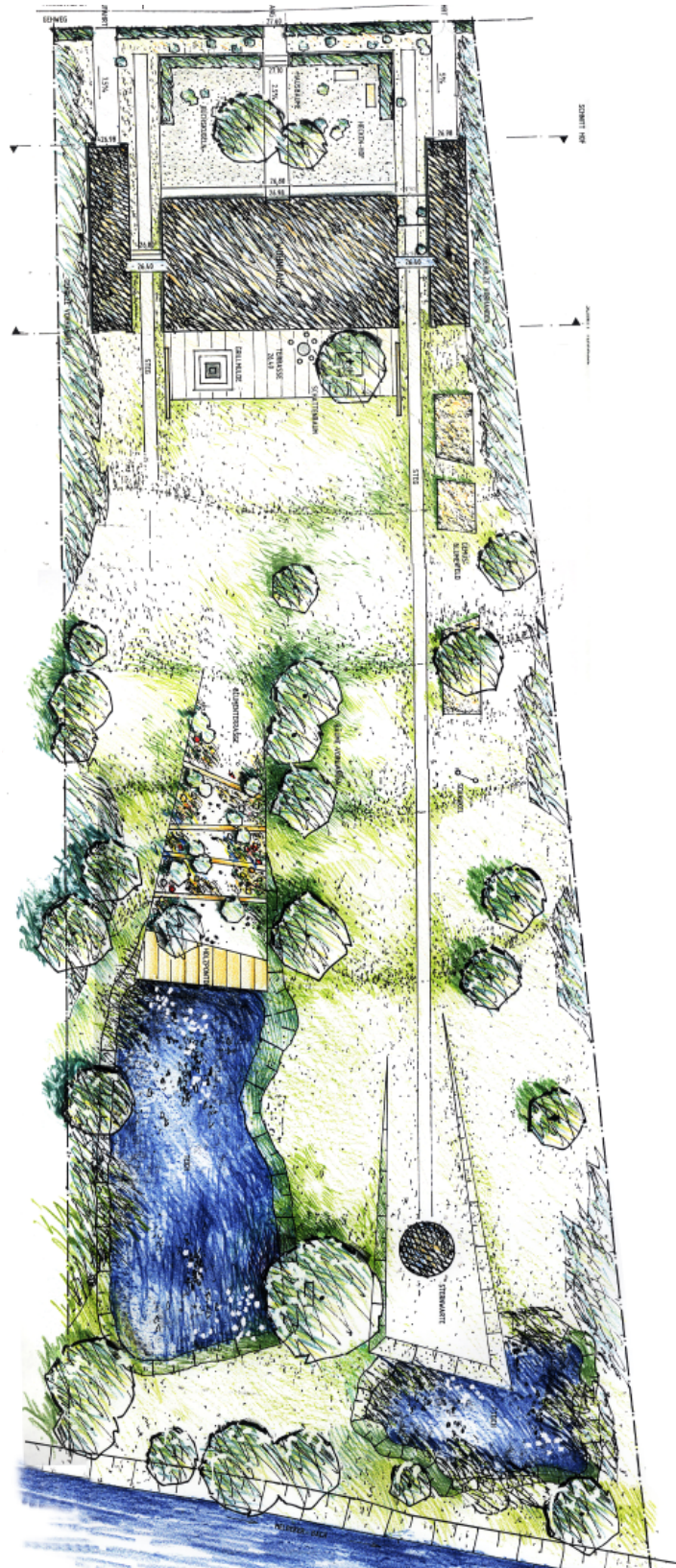
CONTACT

Jarrestraße 80
22303 Hamburg
Germany

Telephone +49 (0) 40 2 78 41-0
Telefax +49 (0) 40 270 66 68
hamburg@wes-la.de

FOR MORE INFORMATION AND PRESS MATERIAL

Telephone +49 (0) 40 2 78 41-153
Telefax +49 (0) 40 270 66 68
pr@wes-la.de



CONTACT

Jarrestraße 80
22303 Hamburg
Germany

Telephone +49 (0) 40 2 78 41-0
Telefax +49 (0) 40 270 66 68
hamburg@wes-la.de

FOR MORE INFORMATION AND PRESS MATERIAL

Telephone +49 (0) 40 2 78 41-153
Telefax +49 (0) 40 270 66 68
pr@wes-la.de

Legal notice

WES GmbH
LandschaftsArchitektur (LandscapeArchitecture)

Managing Shareholders:
Peter Schatz
Wolfgang Betz
Michael Kaschke
Henrike Wehberg-Krafft

Managing Director:
Claus Rödding

District court Hamburg HRB 100420

Person responsible for content according to
§ 55 Abs. 2 RStV: Wolfgang Betz (address as above)

The rules of professional conduct are specified in:
(1) Chamber of Construction Law Hamburg
(BauKaG HH)
(2) Implementing regulations for Chamber of
Construction Law (DVO BauKaG HH)
(3) Main statute of Hamburg Chamber of Architects

The professional regulations can be viewed and
accessed via the website of the Hamburg Chamber of
Architects www.akhh.de / Section: Recht (legal issues).

The legal occupational title "Landschaftsarchitekt"
(landscape architect) was awarded to WES & Partner
GbR in Germany following their entry in the list of ar-
chitects of the Hamburg Chamber of Architects.

Hamburgische Architektenkammer
(Hamburg Chamber of Architects)
Grindelhof 40
20146 Hamburg
Telephone: +49 (0)40 441841-0
Telefax: +49 (0)40 441841-44
info@akhh.de
www.akhh.de

Copyright

The contents and works produced by the site operator
are subject to German copyright laws. The duplication,
editing, distribution and any kind of use beyond what
is permitted by the copyright laws requires written
authorisation from the respective author or content
creator.

Image rights

WES GmbH LandscapeArchitecture owns the unlimi-
ted usage rights and non-exclusive rights for all of the
image material that appears in this document.

In the context of the use of the external image material
we are exempt from any claims by third parties. WES
GmbH LandscapeArchitecture is not liable for images
provided by the project partners.

By providing image material, the project partners
avouch that they have unrestricted use of the image
material, that it is not subject to rights by third parties,
the persons pictured consent to the publication and
that no fees must be paid for this.

Links to photographers

Jürgen Holzenleuchter
www.holzenleuchter.com

Lageplan: WES LandschaftsArchitektur
www.wes-la.de

CONTACT

Jarrestraße 80
22303 Hamburg
Germany

Telephone +49 (0) 40 2 78 41-0
Telefax +49 (0) 40 270 66 68
hamburg@wes-la.de

FOR MORE INFORMATION AND PRESS MATERIAL

Telephone +49 (0) 40 2 78 41-153
Telefax +49 (0) 40 270 66 68
pr@wes-la.de