



Private House Garden, Hamburg

WATERSIDE BANDS OF BLOSSOMS

Concept

The horizontal articulation of the facade of the historic town house in Hamburg-Harvestehude sets the theme for the redesign of the garden! New strips of hedges and other materials complement and structure the front and rear gardens into a series of bands, creating small spaces to be filled with different floral themes. The motif begins at the street and stretches along the front and rear gardens, from one side of the plot to the other, all the way to the new paved area at the rear, beside the Alsterfleet.

In the rear garden, a generous terrace was created as a base for the architecture. The exterior stair links the small outdoor sitting area of the bel étage to the garden. This yielded an outdoor room, framed by hedges, with views of the garden and ample space for the young family's long banquet table. Bands of natural stone extend across the lawn, straddling the garden and stretching out as a trail that leads to the boathouse and the paved area along the water. They are supplemented by "green bands", in the form of hedges, that form chambers where the existing solitary elements have been given new plant companions, and which integrates a children's play area. The motif of bands of various materials ends at a seating area by the water, alongside the "blue band" of the Alster. There is a paved surface for the boathouse, sufficient space to manoeuvre, and an added meadow at water's edge as a buffer. Here the view is key!

Client

PRIVATE CLIENT

Project period

2016 - 2019

Size

710 m²

Type

PARKS & GARDENS

Location

HAMBURG, GERMANY

Realisation

WES LANDSCAPEARCHITECTURE

Partners

WES LANDSCAPEARCHITECTURE
WITH MAXIE STRAUCH

CONTACT

Jarrestraße 80
22303 Hamburg
Germany

Telephone +49 (0) 40 2 78 41-0
Telefax +49 (0) 40 270 66 68
hamburg@wes-la.de

FOR MORE INFORMATION AND PRESS MATERIAL

Telephone +49 (0) 40 2 78 41-153
Telefax +49 (0) 40 270 66 68
pr@wes-la.de

Project images



CONTACT

Jarrestraße 80
22303 Hamburg
Germany

Telephone +49 (0) 40 2 78 41-0
Telefax +49 (0) 40 270 66 68
hamburg@wes-la.de

FOR MORE INFORMATION AND PRESS MATERIAL

Telephone +49 (0) 40 2 78 41-153
Telefax +49 (0) 40 270 66 68
pr@wes-la.de

Project images



CONTACT

Jarrestraße 80
22303 Hamburg
Germany

Telephone +49 (0) 40 2 78 41-0
Telefax +49 (0) 40 270 66 68
hamburg@wes-la.de

FOR MORE INFORMATION AND PRESS MATERIAL

Telephone +49 (0) 40 2 78 41-153
Telefax +49 (0) 40 270 66 68
pr@wes-la.de

Project images



CONTACT

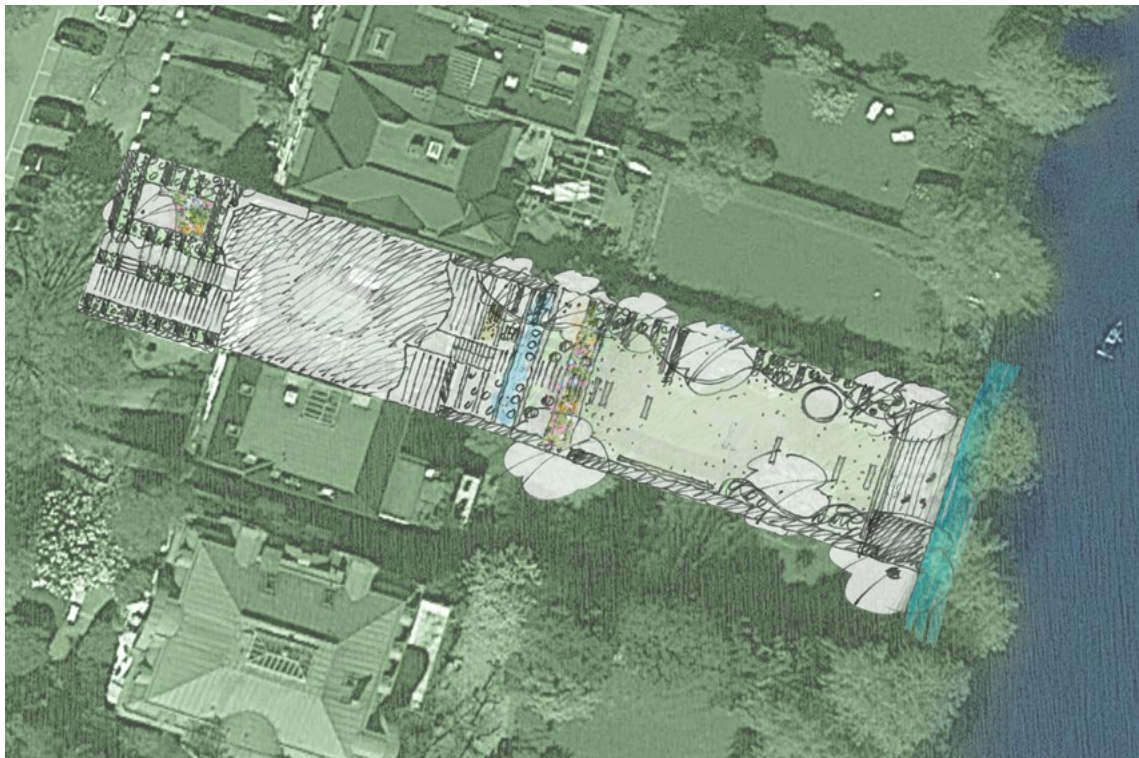
Jarrestraße 80
22303 Hamburg
Germany

Telephone +49 (0) 40 2 78 41-0
Telefax +49 (0) 40 270 66 68
hamburg@wes-la.de

FOR MORE INFORMATION AND PRESS MATERIAL

Telephone +49 (0) 40 2 78 41-153
Telefax +49 (0) 40 270 66 68
pr@wes-la.de

Project images



CONTACT

Jarrestraße 80
22303 Hamburg
Germany

Telephone +49 (0) 40 2 78 41-0
Telefax +49 (0) 40 270 66 68
hamburg@wes-la.de

FOR MORE INFORMATION AND PRESS MATERIAL

Telephone +49 (0) 40 2 78 41-153
Telefax +49 (0) 40 270 66 68
pr@wes-la.de

Legal notice

WES GmbH
LandschaftsArchitektur (LandscapeArchitecture)

Managing Shareholders:

Peter Schatz
Wolfgang Betz
Michael Kaschke
Henrike Wehberg-Krafft
Claus Rödding

District court Hamburg HRB 100420

Person responsible for content according to
§ 55 Abs. 2 RStV: Wolfgang Betz (address as above)

The rules of professional conduct are specified in:

- (1) Chamber of Construction Law Hamburg
(BauKaG HH)
- (2) Implementing regulations for Chamber of
Construction Law (DVO BauKaG HH)
- (3) Main statute of Hamburg Chamber of Architects

The professional regulations can be viewed and
accessed via the website of the Hamburg Chamber of
Architects www.akhh.de / Section: Recht (legal issues).

The legal occupational title "Landschaftsarchitekt"
(landscape architect) was awarded to WES & Partner
GbR in Germany following their entry in the list of archi-
tects of the Hamburg Chamber of Architects.

Hamburgische Architektenkammer
(Hamburg Chamber of Architects)
Grindelhof 40
20146 Hamburg
Telephone: +49 (0)40 441841-0
Telefax: +49 (0)40 441841-44
info@akhh.de
www.akhh.de

Copyright

The contents and works produced by the site operator
are subject to German copyright laws. The duplication,
editing, distribution and any kind of use beyond what
is permitted by the copyright laws requires written
authorisation from the respective author or content
creator.

Image rights

WES GmbH LandscapeArchitecture owns the unlimi-
ted usage rights and non-exclusive rights for all of the
image material that appears in this document.

In the context of the use of the external image material
we are exempt from any claims by third parties. WES
GmbH LandscapeArchitecture is not liable for images
provided by the project partners.

By providing image material, the project partners
avouch that they have unrestricted use of the image
material, that it is not subject to rights by third parties,
the persons pictured consent to the publication and
that no fees must be paid for this.

Links to photographers

Siteplan + Scetch:
WES LandschaftsArchitektur
www.wes-la.de

Photos:
Ferdinand Graf Luckner
www.graf-luckner.de

CONTACT

Jarrestraße 80
22303 Hamburg
Germany

Telephone +49 (0) 40 2 78 41-0
Telefax +49 (0) 40 270 66 68
hamburg@wes-la.de

FOR MORE INFORMATION AND PRESS MATERIAL

Telephone +49 (0) 40 2 78 41-153
Telefax +49 (0) 40 270 66 68
pr@wes-la.de