



*Olympus Campus, Hamburg*

## INNER TRANQUIL ZONES

### *Concept*

Four differently designed inner courtyards form a calming contrast to the location of the building complex on a main access road with heavy traffic. Designed as places of peace and contemplation, the courtyards also serve as communication and meeting rooms, which can be used by employees as outdoor workspaces and as a place for leisure and breaks.

In an interplay with the functional architecture of the buildings, the organically loose and plant-like design determines the individual inner courtyards. Like a game with different scales, the formal language used translates structures from the macrocosm and microcosm into plant images, similar to the view through a telescope or microscope.

A fountain in one of the courtyards mirrors the sky, providing an invigorating water element. The roof surfaces have been textured with greenery and one roof terrace has been embedded in a higher, meadow-like texture. Some of the materials and plant species used can be considered a tribute to Japanese horticulture, the home of Olympus.

### *Client*

OLYMPUS EUROPA SE & CO. KG

### *Project period*

SINCE 2016

### *Size*

8.370 m<sup>2</sup>

### *Type*

SERVICE & ADMINISTRATION

### *Location*

HAMBURG, GERMANY

### *Competition*

1. PRIZE, 2006

### *Realisation*

WES LANDSCAPEARCHITECTURE

### *Partner*

GMP ARCHITEKTEN VON GERKAN MARG UND PARTNER, HAMBURG

### CONTACT

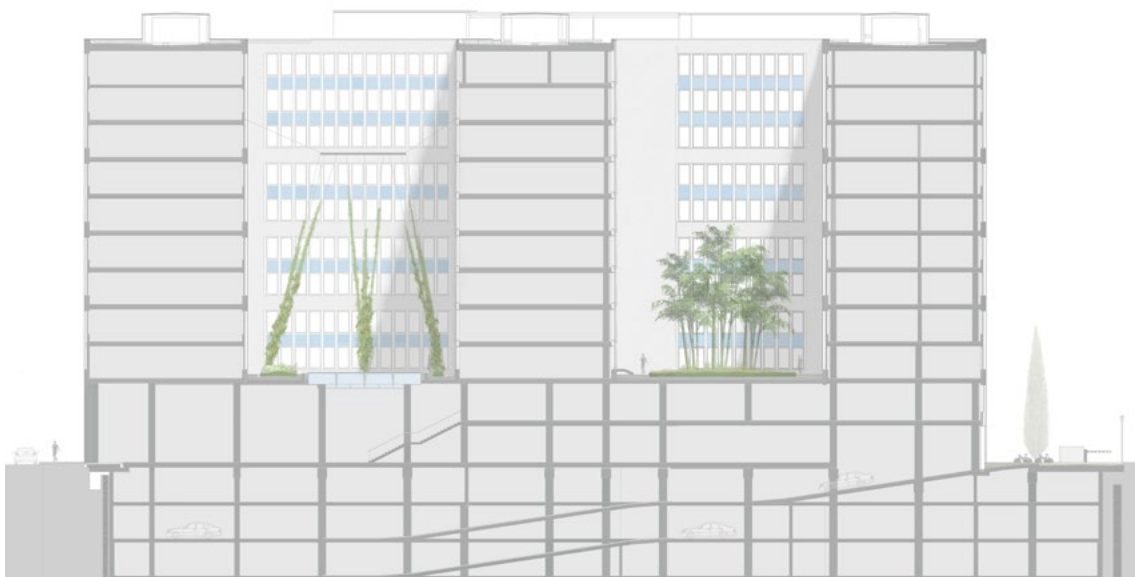
Jarrestraße 80  
22303 Hamburg  
Germany

Telephone +49 (0) 40 2 78 41-0  
Telefax +49 (0) 40 270 66 68  
hamburg@wes-la.de

### FOR MORE INFORMATION AND PRESS MATERIAL

Telephone +49 (0) 40 2 78 41-153  
Telefax +49 (0) 40 270 66 68  
pr@wes-la.de

*Project Images*



CONTACT

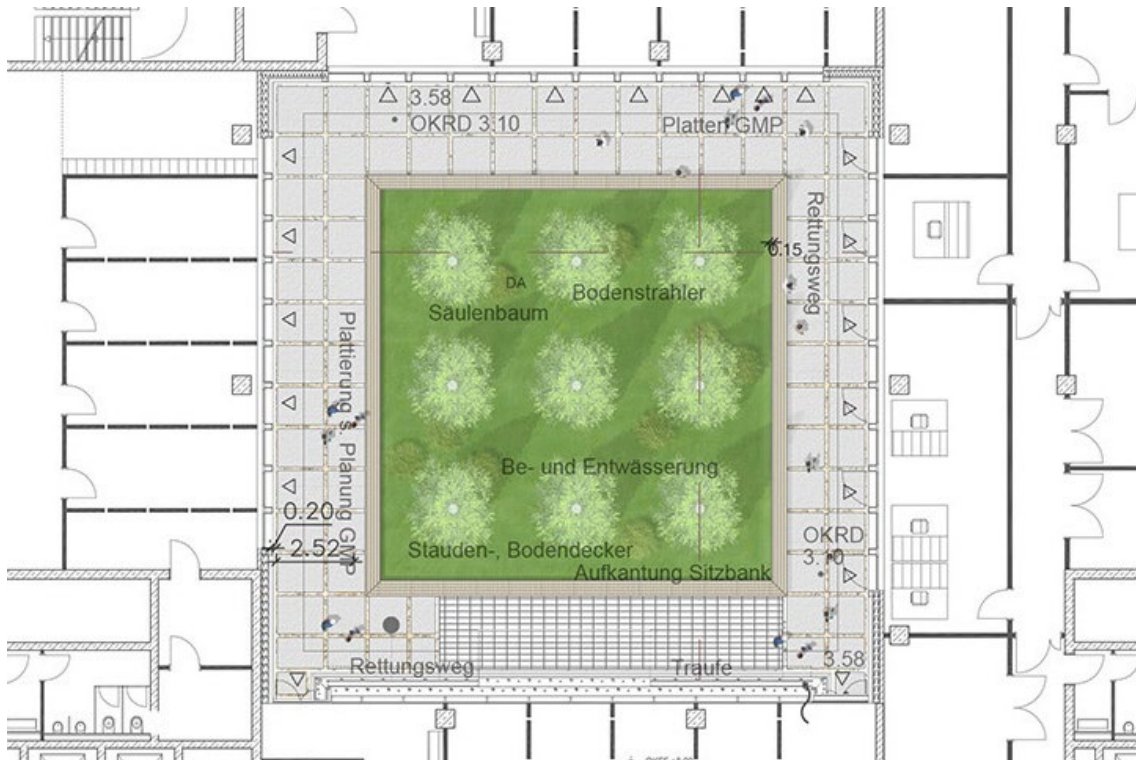
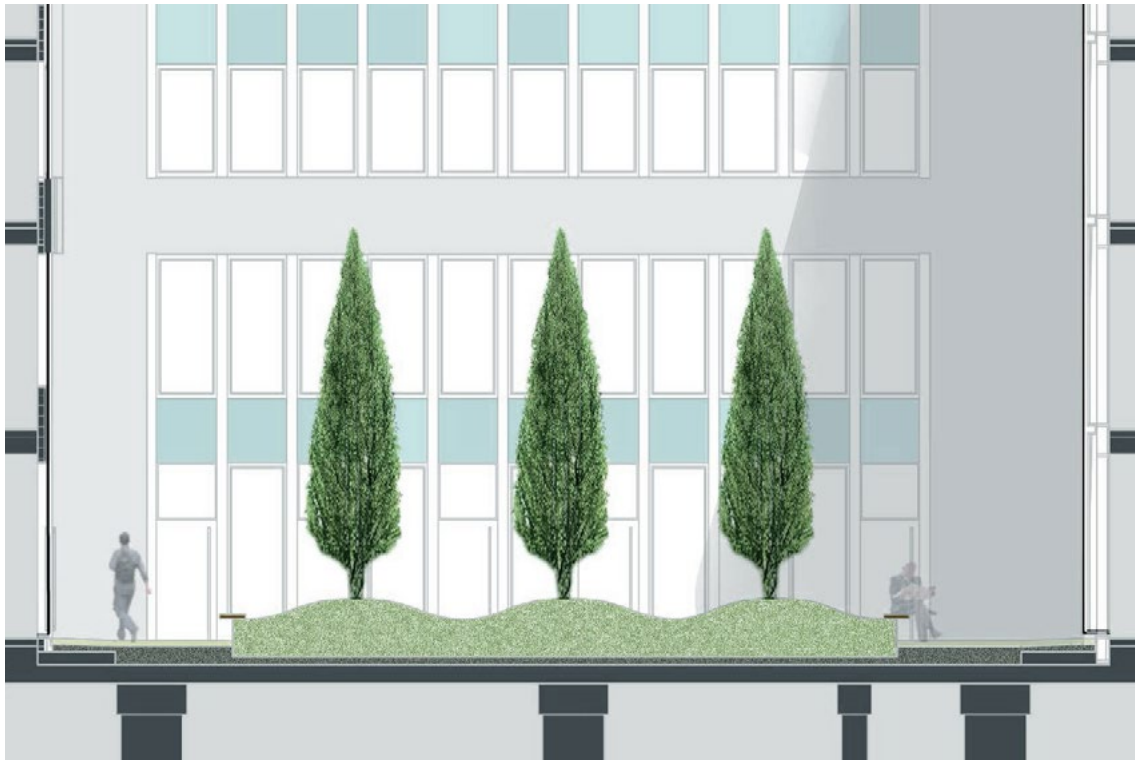
Jarrestraße 80  
22303 Hamburg  
Germany

Telephone +49 (0) 40 2 78 41-0  
Telefax +49 (0) 40 270 66 68  
hamburg@wes-la.de

FOR MORE INFORMATION AND PRESS MATERIAL

Telephone +49 (0) 40 2 78 41-153  
Telefax +49 (0) 40 270 66 68  
pr@wes-la.de

Project Images



CONTACT

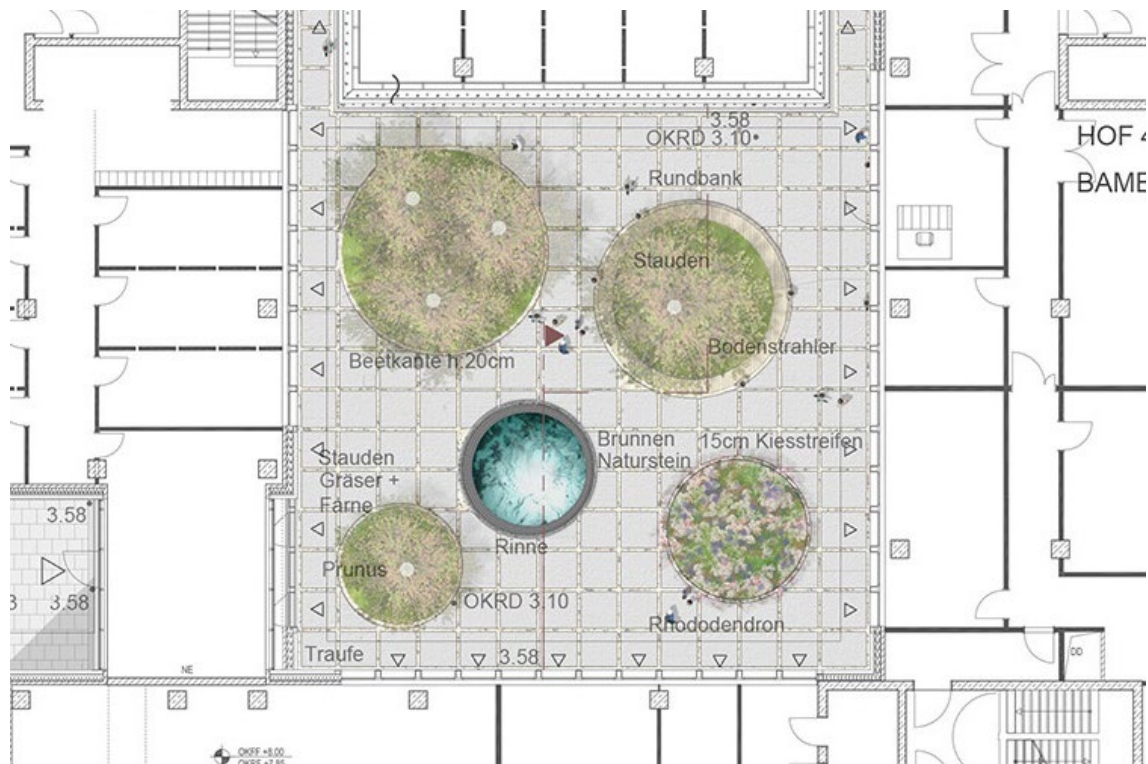
Jarrestraße 80  
22303 Hamburg  
Germany

Telephone +49 (0) 40 2 78 41-0  
Telefax +49 (0) 40 270 66 68  
hamburg@wes-la.de

FOR MORE INFORMATION AND PRESS MATERIAL

Telephone +49 (0) 40 2 78 41-153  
Telefax +49 (0) 40 270 66 68  
pr@wes-la.de

Project Images



CONTACT

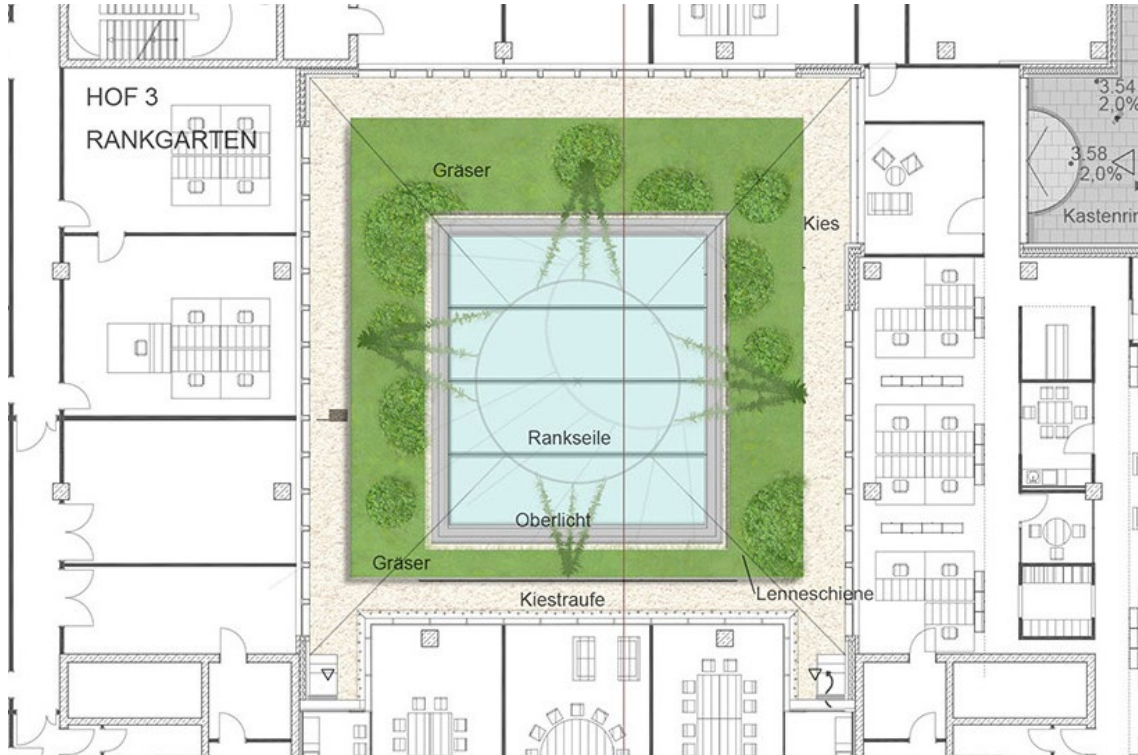
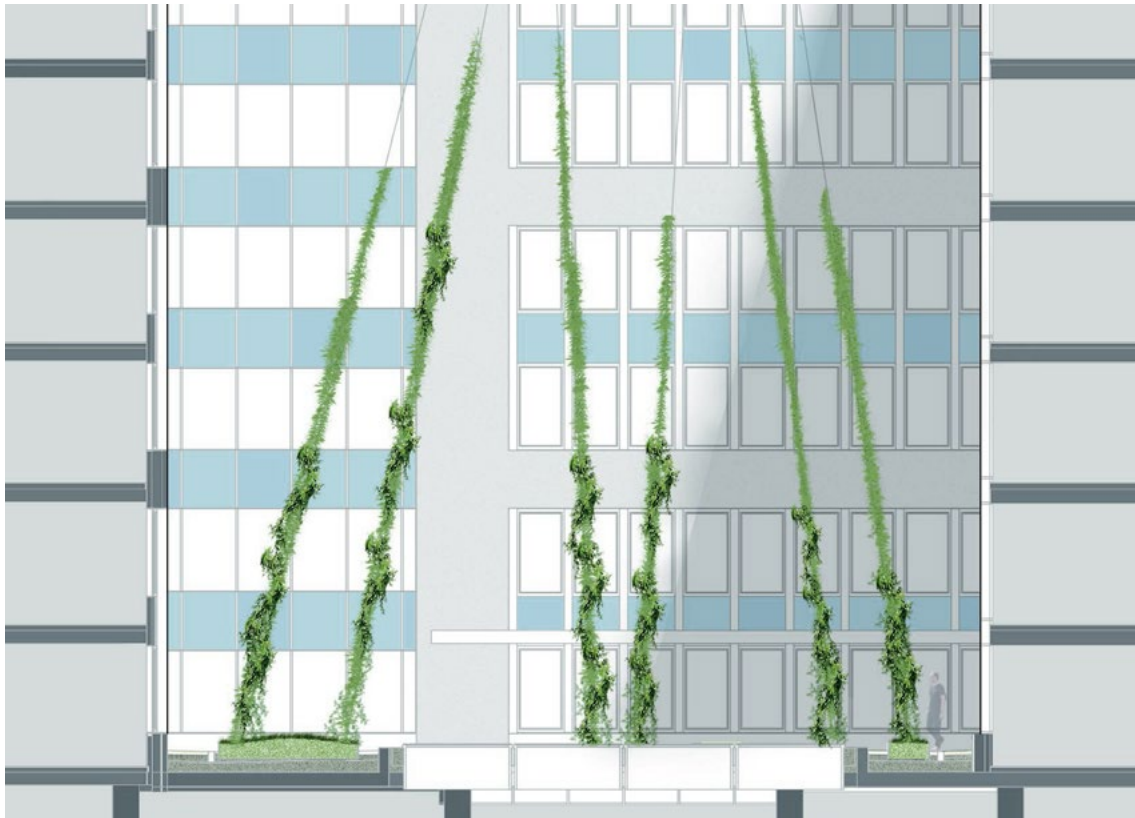
Jarrestraße 80  
22303 Hamburg  
Germany

Telephone +49 (0) 40 2 78 41-0  
Telefax +49 (0) 40 270 66 68  
hamburg@wes-la.de

FOR MORE INFORMATION AND PRESS MATERIAL

Telephone +49 (0) 40 2 78 41-153  
Telefax +49 (0) 40 270 66 68  
pr@wes-la.de

Project Images



CONTACT

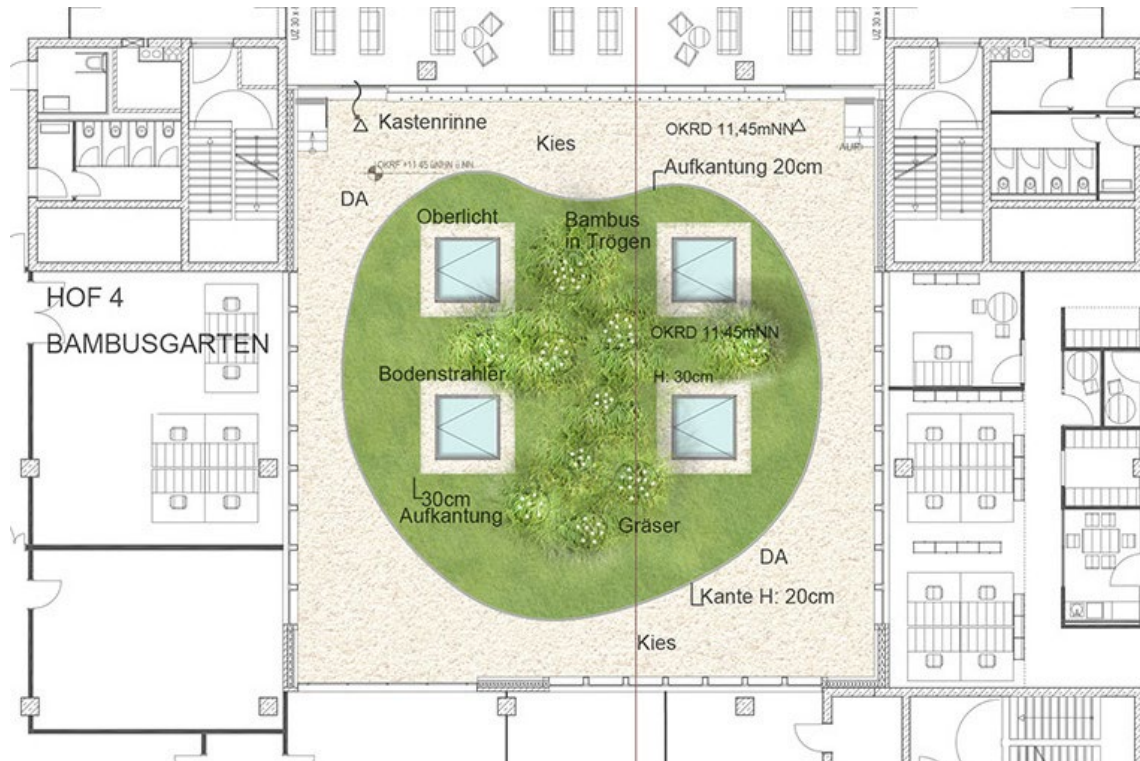
Jarrestraße 80  
22303 Hamburg  
Germany

Telephone +49 (0) 40 2 78 41-0  
Telefax +49 (0) 40 270 66 68  
hamburg@wes-la.de

FOR MORE INFORMATION AND PRESS MATERIAL

Telephone +49 (0) 40 2 78 41-153  
Telefax +49 (0) 40 270 66 68  
pr@wes-la.de

Project Images



CONTACT

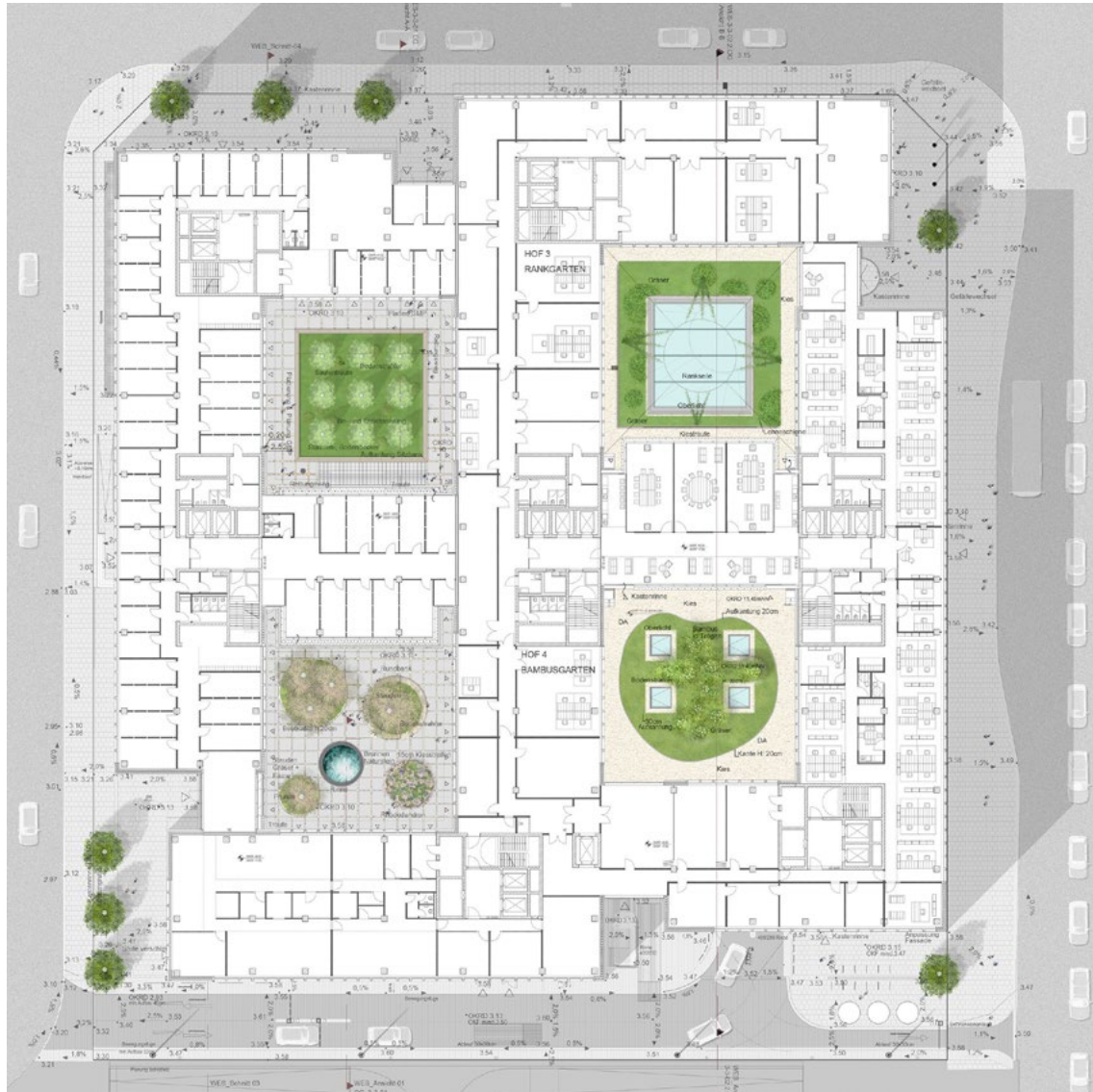
Jarrestraße 80  
22303 Hamburg  
Germany

Telephone +49 (0) 40 2 78 41-0  
Telefax +49 (0) 40 270 66 68  
hamburg@wes-la.de

FOR MORE INFORMATION AND PRESS MATERIAL

Telephone +49 (0) 40 2 78 41-153  
Telefax +49 (0) 40 270 66 68  
pr@wes-la.de

Project Images



CONTACT

Jarrestraße 80  
22303 Hamburg  
Germany

Telephone +49 (0) 40 2 78 41-0  
Telefax +49 (0) 40 270 66 68  
hamburg@wes-la.de

FOR MORE INFORMATION AND PRESS MATERIAL

Telephone +49 (0) 40 2 78 41-153  
Telefax +49 (0) 40 270 66 68  
pr@wes-la.de

## *Legal notice*

WES GmbH  
LandschaftsArchitektur (LandscapeArchitecture)

### Managing Shareholders:

Peter Schatz  
Wolfgang Betz  
Michael Kaschke  
Henrike Wehberg-Krafft  
Claus Rödding

District court Hamburg HRB 100420

Person responsible for content according to  
§ 55 Abs. 2 RStV: Wolfgang Betz (address as above)

The rules of professional conduct are specified in:

- (1) Chamber of Construction Law Hamburg  
(BauKaG HH)
- (2) Implementing regulations for Chamber of  
Construction Law (DVO BauKaG HH)
- (3) Main statute of Hamburg Chamber of Architects

The professional regulations can be viewed and  
accessed via the website of the Hamburg Chamber of  
Architects [www.akhh.de](http://www.akhh.de) / Section: Recht (legal issues).

The legal occupational title "Landschaftsarchitekt"  
(landscape architect) was awarded to WES & Partner  
GbR in Germany following their entry in the list of ar-  
chitects of the Hamburg Chamber of Architects.

Hamburgische Architektenkammer  
(Hamburg Chamber of Architects)  
Grindelhof 40  
20146 Hamburg  
Telephone: +49 (0)40 441841-0  
Telefax: +49 (0)40 441841-44  
[info@akhh.de](mailto:info@akhh.de)  
[www.akhh.de](http://www.akhh.de)

## *Copyright*

The contents and works produced by the site operator  
are subject to German copyright laws. The duplication,  
editing, distribution and any kind of use beyond what  
is permitted by the copyright laws requires written  
authorisation from the respective author or content  
creator.

## *Image rights*

WES GmbH LandscapeArchitecture owns the unlimi-  
ted usage rights and non-exclusive rights for all of the  
image material that appears in this document.

In the context of the use of the external image material  
we are exempt from any claims by third parties. WES  
GmbH LandscapeArchitecture is not liable for images  
provided by the project partners.

By providing image material, the project partners  
avouch that they have unrestricted use of the image  
material, that it is not subject to rights by third parties,  
the persons pictured consent to the publication and  
that no fees must be paid for this.

## *Links to photographers*

Site plans and sectional views:  
WES LandschaftsArchitektur  
[www.wes-la.de](http://www.wes-la.de)

Visualisations:  
gmp von Gerkan, Marg und Partner  
[www.gmp-architekten.de](http://www.gmp-architekten.de)

## CONTACT

Jarrestraße 80  
22303 Hamburg  
Germany

Telephone +49 (0) 40 2 78 41-0  
Telefax +49 (0) 40 270 66 68  
[hamburg@wes-la.de](mailto:hamburg@wes-la.de)

## FOR MORE INFORMATION AND PRESS MATERIAL

Telephone +49 (0) 40 2 78 41-153  
Telefax +49 (0) 40 270 66 68  
[pr@wes-la.de](mailto:pr@wes-la.de)