



*Extension of the Gelehrtenschule des Johanneums, Hamburg*

## SUBTLE DIFFERENTIATION

### *Concept*

The Gelehrtenschule des Johanneums zu Hamburg is one of the oldest and most traditional grammar schools in Germany. The new brick building "Forum Johanneum" houses the rooms of the artistic subjects art, music, and the performing arts, as well as a cafeteria and a sports hall. It supplements the school built by Fritz Schumacher in 1914, creating a new ensemble.

In order to help give these contents the appropriate framework and open space, we have allowed ourselves to be "guided" by thoughts about continuity and what already exists, about quality and development, liberalism and humanism. The concept is limited to just a few instruments: lawns, squares and a light grove of oaks with raised crowns.

It is a play of structure, superimposition, symmetry and small irregularities that has led to this open, inviting and straightforward "campus". Within this very calm, clearly-structured facility, diverse and multifunctional interspaces have been created. The differentiations are subtle. The multi-purpose sports hall has been integrated into the colour scheme and overall concept in a way that is likewise reserved and reduced.

### *Client*

FORUM JOHANNEUM GGMBH REPRESENTED BY  
GATOR BETEILIGUNGSGESELLSCHAFT MBH, HAMBURG

### *Project period*

2004-2007

### *Size*

14.550 m<sup>2</sup>

### *Type*

EDUCATION & RESEARCH

### *Location*

HAMBURG, GERMANY

### *Competition*

### *Realisation*

WES & PARTNER

### *Partner*

STUDIO ANDREAS HELLER GMBH  
ARCHITECTS & DESIGNERS GMBH, HAMBURG  
HS-ARCHITEKTEN, HAMBURG

### CONTACT

Jarrestraße 80  
22303 Hamburg  
Germany

Telephone +49 (0) 40 2 78 41-0  
Telefax +49 (0) 40 270 66 68  
hamburg@wes-la.de

### FOR MORE INFORMATION AND PRESS MATERIAL

Telephone +49 (0) 40 2 78 41-153  
Telefax +49 (0) 40 270 66 68  
pr@wes-la.de

*Publications*

Internet **VORTEILE**. Das Backsteinmagazin **Raum für Bildung**  
<http://www.backstein-magazin.de/templates/vorteile012014/start.php>  
Hrsg.: Zweischalige Wand Marketing e. V., 1.2014

Buch **Schools. Educational Spaces**  
Autorin: Sibylle Kramer  
Braun Publishing (CH), 2009

Fachzeitschrift "db Deutsche Bauzeitung" **Schumachers Schulen**  
Konradin Medien GmbH, 8.2008

Jahrbuch **Architektur in Hamburg 2007**  
Junius Verlag, 2007

*Auszeichnungen*

**Nominee** Fritz-Höger-Preis 2011  
Initiative Bauen mit Backstein

**2. Preis** Architektur Preis 2008  
Bund Deutscher Architekten (BDA) Hamburg

CONTACT

Jarrestraße 80  
22303 Hamburg  
Germany

Telephone +49 (0) 40 2 78 41-0  
Telefax +49 (0) 40 270 66 68  
hamburg@wes-la.de

FOR MORE INFORMATION AND PRESS MATERIAL

Telephone +49 (0) 40 2 78 41-153  
Telefax +49 (0) 40 270 66 68  
pr@wes-la.de



*Project Images*



CONTACT

Jarrestraße 80  
22303 Hamburg  
Germany

Telephone +49 (0) 40 2 78 41-0  
Telefax +49 (0) 40 270 66 68  
hamburg@wes-la.de

FOR MORE INFORMATION AND PRESS MATERIAL

Telephone +49 (0) 40 2 78 41-153  
Telefax +49 (0) 40 270 66 68  
pr@wes-la.de



*Project Images*



CONTACT

Jarrestraße 80  
22303 Hamburg  
Germany

Telephone +49 (0) 40 2 78 41-0  
Telefax +49 (0) 40 270 66 68  
hamburg@wes-la.de

FOR MORE INFORMATION AND PRESS MATERIAL

Telephone +49 (0) 40 2 78 41-153  
Telefax +49 (0) 40 270 66 68  
pr@wes-la.de



*Project Images*



CONTACT

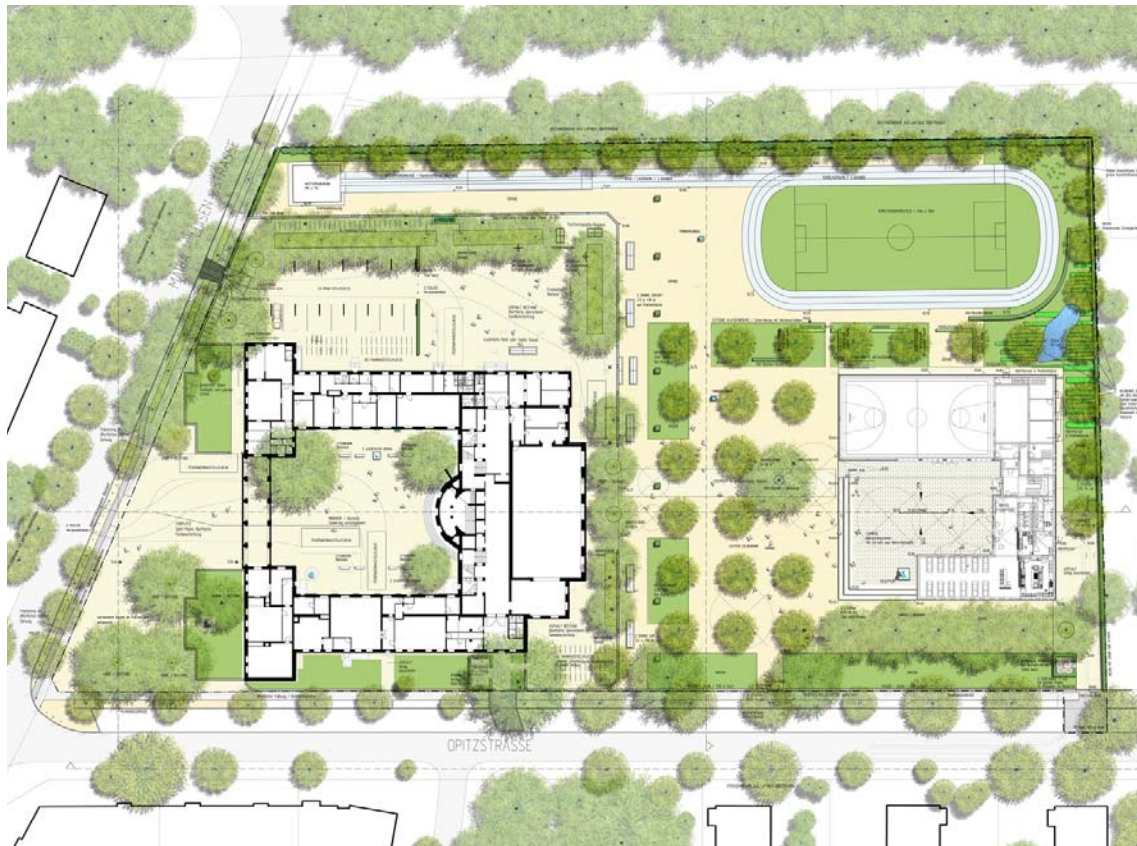
Jarrestraße 80  
22303 Hamburg  
Germany

Telephone +49 (0) 40 2 78 41-0  
Telefax +49 (0) 40 270 66 68  
hamburg@wes-la.de

FOR MORE INFORMATION AND PRESS MATERIAL

Telephone +49 (0) 40 2 78 41-153  
Telefax +49 (0) 40 270 66 68  
pr@wes-la.de

Project Images



CONTACT

Jarrestraße 80  
22303 Hamburg  
Germany

Telephone +49 (0) 40 2 78 41-0  
Telefax +49 (0) 40 270 66 68  
hamburg@wes-la.de

FOR MORE INFORMATION AND PRESS MATERIAL

Telephone +49 (0) 40 2 78 41-153  
Telefax +49 (0) 40 270 66 68  
pr@wes-la.de

## *Legal notice*

WES GmbH  
LandschaftsArchitektur (LandscapeArchitecture)

### Managing Shareholders:

Peter Schatz  
Wolfgang Betz  
Michael Kaschke  
Henrike Wehberg-Krafft

### Managing Director:

Claus Rödding

District court Hamburg HRB 100420

Person responsible for content according to  
§ 55 Abs. 2 RStV: Wolfgang Betz (address as above)

The rules of professional conduct are specified in:

- (1) Chamber of Construction Law Hamburg  
(BauKaG HH)
- (2) Implementing regulations for Chamber of  
Construction Law (DVO BauKaG HH)
- (3) Main statute of Hamburg Chamber of Architects

The professional regulations can be viewed and  
accessed via the website of the Hamburg Chamber of  
Architects [www.akhh.de](http://www.akhh.de) / Section: Recht (legal issues).

The legal occupational title "Landschaftsarchitekt"  
(landscape architect) was awarded to WES & Partner  
GbR in Germany following their entry in the list of ar-  
chitects of the Hamburg Chamber of Architects.

Hamburgische Architektenkammer  
(Hamburg Chamber of Architects)  
Grindelhof 40  
20146 Hamburg  
Telephone: +49 (0)40 441841-0  
Telefax: +49 (0)40 441841-44  
[info@akhh.de](mailto:info@akhh.de)  
[www.akhh.de](http://www.akhh.de)

## *Copyright*

The contents and works produced by the site operator  
are subject to German copyright laws. The duplication,  
editing, distribution and any kind of use beyond what  
is permitted by the copyright laws requires written  
authorisation from the respective author or content  
creator.

## *Image rights*

WES GmbH LandscapeArchitecture owns the unlimi-  
ted usage rights and non-exclusive rights for all of the  
image material that appears in this document.

In the context of the use of the external image material  
we are exempt from any claims by third parties. WES  
GmbH LandscapeArchitecture is not liable for images  
provided by the project partners.

By providing image material, the project partners  
avouch that they have unrestricted use of the image  
material, that it is not subject to rights by third parties,  
the persons pictured consent to the publication and  
that no fees must be paid for this.

## *Links to photographers*

Jörn Hustedt | HUSTEDTnetwork Fotografie  
[www.hustedtnetwork.de](http://www.hustedtnetwork.de)

Werner Huthmacher  
[www.wernerhuthmacher.de](http://www.wernerhuthmacher.de)

Visualisation: WES LandschaftsArchitektur  
[www.wes-la.de](http://www.wes-la.de)

## CONTACT

Jarrestraße 80  
22303 Hamburg  
Germany

Telephone +49 (0) 40 2 78 41-0  
Telefax +49 (0) 40 270 66 68  
[hamburg@wes-la.de](mailto:hamburg@wes-la.de)

## FOR MORE INFORMATION AND PRESS MATERIAL

Telephone +49 (0) 40 2 78 41-153  
Telefax +49 (0) 40 270 66 68  
[pr@wes-la.de](mailto:pr@wes-la.de)