



*Reemtsma Park, Hamburg*

## CASPAR DAVID FRIEDRICH

### *Concept*

The more time we spent looking around the Reemtsma site, the more it captivated us. We were fascinated by the concept of rescuing the wonderful old Caspar-David-Friedrich oaks from their "obscurity", from the thicket, and putting them on a stage, hence allowing them to have a strong influence on the ambience of the new park.

With the consistent implementation of the park concept and the big picturesque trees on the green lawn, the calm ambience and spaciousness created on the Reemtsma site have become perceptible in a different quality and the park has developed its holistic, new and unmistakable identity.

A small number of artistic concepts have been integrated carefully yet systematically into the park. Hence today partial areas of the park form a topographical sculpture in the south, while in the east a rectangular "water-mirror" reflects the sky. In the northwest, the "magical tree circle" and the stone bench covered with a film of water, which also incorporates the change in the height of the site, have been created.

### *Client*

GBR REEMTSMA PARK, VERTRETEN DURCH GATOR BETEILIGUNGSGESELLSCHAFT MBH, HAMBURG

### *Project period*

2003-2009

### *Size*

39.730 m<sup>2</sup>

### *Type*

PARKS & GARDENS

### *Location*

HAMBURG, GERMANY

### *Realisation*

WES & PARTNER

### *Partner*

HELMUT RIEMANN ARCHITEKTEN GMBH, LÜBECK  
HS-ARCHITEKTEN, HAMBURG

### CONTACT

Jarrestraße 80  
22303 Hamburg  
Germany

Telephone +49 (0) 40 2 78 41-0  
Telefax +49 (0) 40 270 66 68  
hamburg@wes-la.de

### FOR MORE INFORMATION AND PRESS MATERIAL

Telephone +49 (0) 40 2 78 41-153  
Telefax +49 (0) 40 270 66 68  
pr@wes-la.de

*Publications*

Trade journal Bauwelt **Othmarschen: Wohnen bei Reemtsma**

Author: Ulrich Höhns

Bauverlag BV GmbH, No. 7-8.2010

Yearbook Architektur in Hamburg **Glückliche Fügung: Neue und alte Häuser im Reemtsma Park**

Author: Ulrich Höhns

Junius Verlag, 2009

*Awards*

**2. Prize Architecture Prize 2010**

Association of German Architects (BDA) Hamburg

**Recognition German Landscape Architecture Prize 2009**

Federation of German Landscape Architects (BDLA)

**Design Prize 2012**

Wüstenrot Foundation

**Carl-Friedrich Fischer Prize 2014**

Huamn Living Prize Foundation

CONTACT

Jarrestraße 80  
22303 Hamburg  
Germany

Telephone +49 (0) 40 2 78 41-0  
Telefax +49 (0) 40 270 66 68  
hamburg@wes-la.de

FOR MORE INFORMATION AND PRESS MATERIAL

Telephone +49 (0) 40 2 78 41-153  
Telefax +49 (0) 40 270 66 68  
pr@wes-la.de

*Project Images*



CONTACT

Jarrestraße 80  
22303 Hamburg  
Germany

Telephone +49 (0) 40 2 78 41-0  
Telefax +49 (0) 40 270 66 68  
hamburg@wes-la.de

FOR MORE INFORMATION AND PRESS MATERIAL

Telephone +49 (0) 40 2 78 41-153  
Telefax +49 (0) 40 270 66 68  
pr@wes-la.de

*Project Images*



CONTACT

Jarrestraße 80  
22303 Hamburg  
Germany

Telephone +49 (0) 40 2 78 41-0  
Telefax +49 (0) 40 270 66 68  
hamburg@wes-la.de

FOR MORE INFORMATION AND PRESS MATERIAL

Telephone +49 (0) 40 2 78 41-153  
Telefax +49 (0) 40 270 66 68  
pr@wes-la.de

*Project Images*



CONTACT

Jarrestraße 80  
22303 Hamburg  
Germany

Telephone +49 (0) 40 2 78 41-0  
Telefax +49 (0) 40 270 66 68  
hamburg@wes-la.de

FOR MORE INFORMATION AND PRESS MATERIAL

Telephone +49 (0) 40 2 78 41-153  
Telefax +49 (0) 40 270 66 68  
pr@wes-la.de

*Project Images*



CONTACT

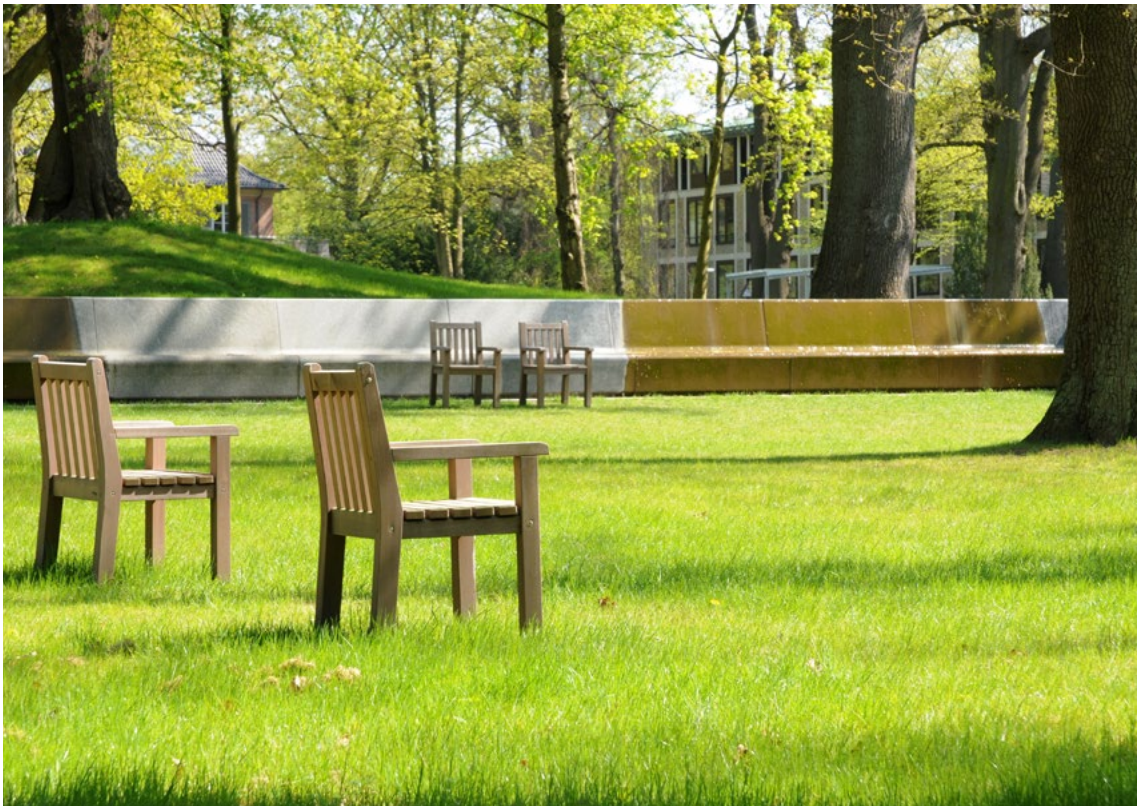
Jarrestraße 80  
22303 Hamburg  
Germany

Telephone +49 (0) 40 2 78 41-0  
Telefax +49 (0) 40 270 66 68  
hamburg@wes-la.de

FOR MORE INFORMATION AND PRESS MATERIAL

Telephone +49 (0) 40 2 78 41-153  
Telefax +49 (0) 40 270 66 68  
pr@wes-la.de

*Project Images*



CONTACT

Jarrestraße 80  
22303 Hamburg  
Germany

Telephone +49 (0) 40 2 78 41-0  
Telefax +49 (0) 40 270 66 68  
hamburg@wes-la.de

FOR MORE INFORMATION AND PRESS MATERIAL

Telephone +49 (0) 40 2 78 41-153  
Telefax +49 (0) 40 270 66 68  
pr@wes-la.de

*Project Images*



CONTACT

Jarrestraße 80  
22303 Hamburg  
Germany

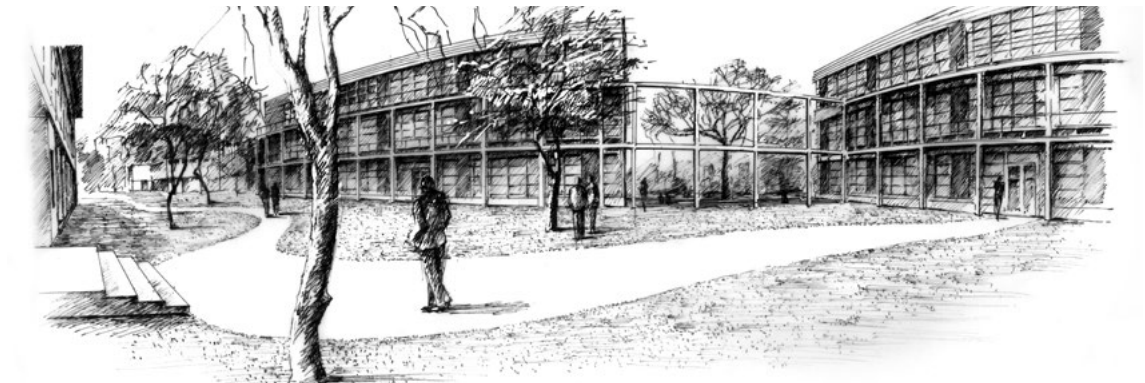
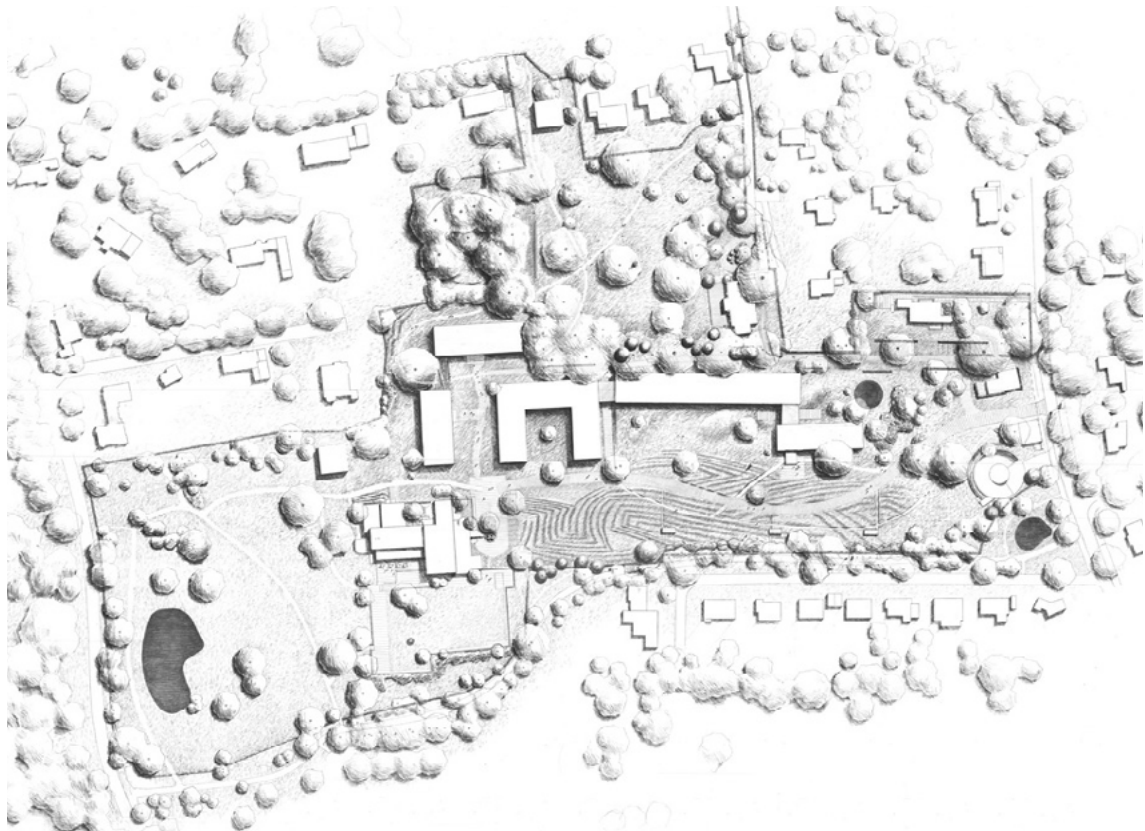
Telephone +49 (0) 40 2 78 41-0  
Telefax +49 (0) 40 270 66 68  
hamburg@wes-la.de

FOR MORE INFORMATION AND PRESS MATERIAL

Telephone +49 (0) 40 2 78 41-153  
Telefax +49 (0) 40 270 66 68  
pr@wes-la.de



Project Images



CONTACT

Jarrestraße 80  
22303 Hamburg  
Germany

Telephone +49 (0) 40 2 78 41-0  
Telefax +49 (0) 40 270 66 68  
hamburg@wes-la.de

FOR MORE INFORMATION AND PRESS MATERIAL

Telephone +49 (0) 40 2 78 41-153  
Telefax +49 (0) 40 270 66 68  
pr@wes-la.de

## *Legal notice*

WES GmbH  
LandschaftsArchitektur (LandscapeArchitecture)

### Managing Shareholders:

Peter Schatz  
Wolfgang Betz  
Michael Kaschke  
Henrike Wehberg-Krafft  
Claus Rödding

District court Hamburg HRB 100420

Person responsible for content according to  
§ 55 Abs. 2 RStV: Wolfgang Betz (address as above)

The rules of professional conduct are specified in:

- (1) Chamber of Construction Law Hamburg  
(BauKaG HH)
- (2) Implementing regulations for Chamber of  
Construction Law (DVO BauKaG HH)
- (3) Main statute of Hamburg Chamber of Architects

The professional regulations can be viewed and  
accessed via the website of the Hamburg Chamber of  
Architects [www.akhh.de](http://www.akhh.de) / Section: Recht (legal issues).

The legal occupational title "Landschaftsarchitekt"  
(landscape architect) was awarded to WES & Partner  
GbR in Germany following their entry in the list of ar-  
chitects of the Hamburg Chamber of Architects.

Hamburgische Architektenkammer  
(Hamburg Chamber of Architects)  
Grindelhof 40  
20146 Hamburg  
Telephone: +49 (0)40 441841-0  
Telefax: +49 (0)40 441841-44  
[info@akhh.de](mailto:info@akhh.de)  
[www.akhh.de](http://www.akhh.de)

## *Copyright*

The contents and works produced by the site operator  
are subject to German copyright laws. The duplication,  
editing, distribution and any kind of use beyond what  
is permitted by the copyright laws requires written  
authorisation from the respective author or content  
creator.

## *Image rights*

WES GmbH LandscapeArchitecture owns the unlimi-  
ted usage rights and non-exclusive rights for all of the  
image material that appears in this document.

In the context of the use of the external image material  
we are exempt from any claims by third parties. WES  
GmbH LandscapeArchitecture is not liable for images  
provided by the project partners.

By providing image material, the project partners  
avouch that they have unrestricted use of the image  
material, that it is not subject to rights by third parties,  
the persons pictured consent to the publication and  
that no fees must be paid for this.

## *Links to photographers*

Klaus Frahm  
[www.klaus-frahm.de](http://www.klaus-frahm.de)

Jörn Hustedt | HUSTEDTnetwork Fotografie  
[www.hustedtnetwork.de](http://www.hustedtnetwork.de)

Tim Corvin Kraus  
[www.tckraus.de](http://www.tckraus.de)

Photos + sketches: WES LandscapeArchitecture  
[www.wes-la.de](http://www.wes-la.de)

## CONTACT

Jarrestraße 80  
22303 Hamburg  
Germany

Telephone +49 (0) 40 2 78 41-0  
Telefax +49 (0) 40 270 66 68  
[hamburg@wes-la.de](mailto:hamburg@wes-la.de)

## FOR MORE INFORMATION AND PRESS MATERIAL

Telephone +49 (0) 40 2 78 41-153  
Telefax +49 (0) 40 270 66 68  
[pr@wes-la.de](mailto:pr@wes-la.de)