



*Campus Riedberg, Frankfurt am Main*

## SPACES FOR THOUGHT

### *Concept*

We are further developing existing views and qualities: terraces, squares, the park, the view of the landscape, artistic metamorphosis. However, we reduce this world to two clear motives: the urban square and the picturesque park. This creates a view from the interior to the exterior, as in Petrarch's ascent of Mount Ventoux, which is considered the first aesthetic perception of the landscape.

Here, a sequence of rooms of great tranquillity and uniformity is created, rooms that unfold their individual ambience in the place they are located. These „visual-spaces“ arise from and draw on a state of equilibrium with the architecture. We open up spaces for thought, we provide a stage, open for many things: contemplation and communication, freedom of thought.

### *Client*

HBM  
HESSISCHES BAUMANAGEMENT FRANKFURT/MAIN

### *Project period*

2008-2012

### *Size*

1. BA: 18.900 m<sup>2</sup>  
GESAMT: 248.100 m<sup>2</sup>

### *Type*

BILDUNG & FORSCHUNG

### *Location*

FRANKFURT AM MAIN, GERMANY

### *Competition*

1. PRIZE, 2008 VOF TENDERING PROCEDURE „CAMPUS RIEDBERG - LEISTUNGEN FÜR LANDSCHAFTSGESTALTUNG UND FREIANLAGENPLANUNG EINSCHL. PLANUNG EINES BOTANISCHEN GARTENS“

### *Realisation*

WES LANDSCHAFTSARCHITEKTUR

### *Partners*

GERBER ARCHITEKTEN, DÜSSELDORF  
KÖNIGS ARCHITEKTEN, KÖLN  
HENN ARCHITEKTEN, MÜNCHEN

### CONTACT

Jarrestraße 80  
22303 Hamburg  
Germany

Telephone +49 (0) 40 2 78 41-0  
Telefax +49 (0) 40 270 66 68  
hamburg@wes-la.de

### FOR MORE INFORMATION AND PRESS MATERIAL

Telephone +49 (0) 40 2 78 41-153  
Telefax +49 (0) 40 270 66 68  
pr@wes-la.de

Project Images



CONTACT

Jarrestraße 80  
22303 Hamburg  
Germany

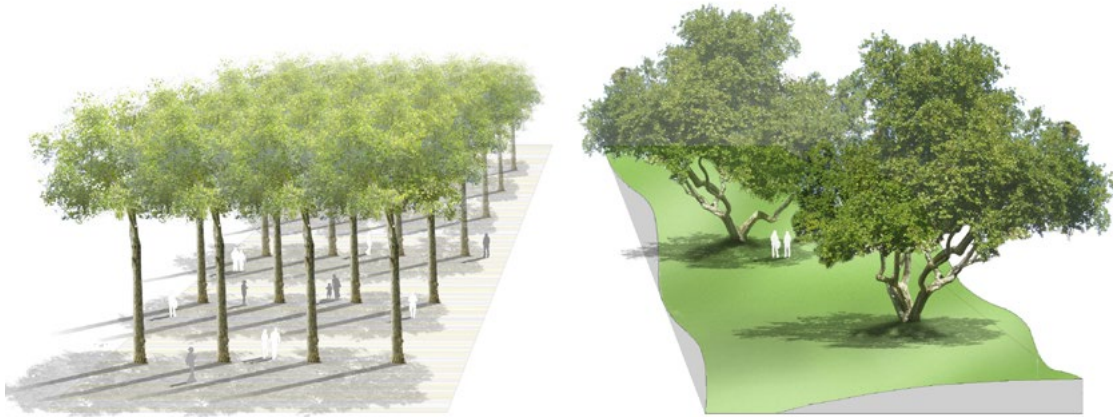
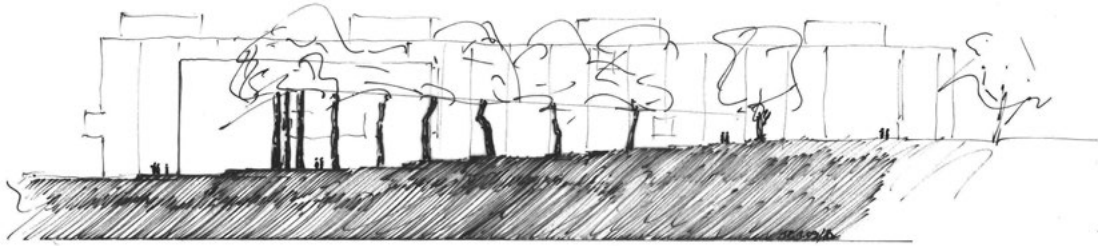
Telephone +49 (0) 40 2 78 41-0  
Telefax +49 (0) 40 270 66 68  
hamburg@wes-la.de

FOR MORE INFORMATION AND PRESS MATERIAL

Telephone +49 (0) 40 2 78 41-153  
Telefax +49 (0) 40 270 66 68  
pr@wes-la.de



Project Images



CONTACT

Jarrestraße 80  
22303 Hamburg  
Germany

Telephone +49 (0) 40 2 78 41-0  
Telefax +49 (0) 40 270 66 68  
hamburg@wes-la.de

FOR MORE INFORMATION AND PRESS MATERIAL

Telephone +49 (0) 40 2 78 41-153  
Telefax +49 (0) 40 270 66 68  
pr@wes-la.de

*Project Images*



CONTACT

Jarrestraße 80  
22303 Hamburg  
Germany

Telephone +49 (0) 40 2 78 41-0  
Telefax +49 (0) 40 270 66 68  
hamburg@wes-la.de

FOR MORE INFORMATION AND PRESS MATERIAL

Telephone +49 (0) 40 2 78 41-153  
Telefax +49 (0) 40 270 66 68  
pr@wes-la.de



*Project Images*



CONTACT

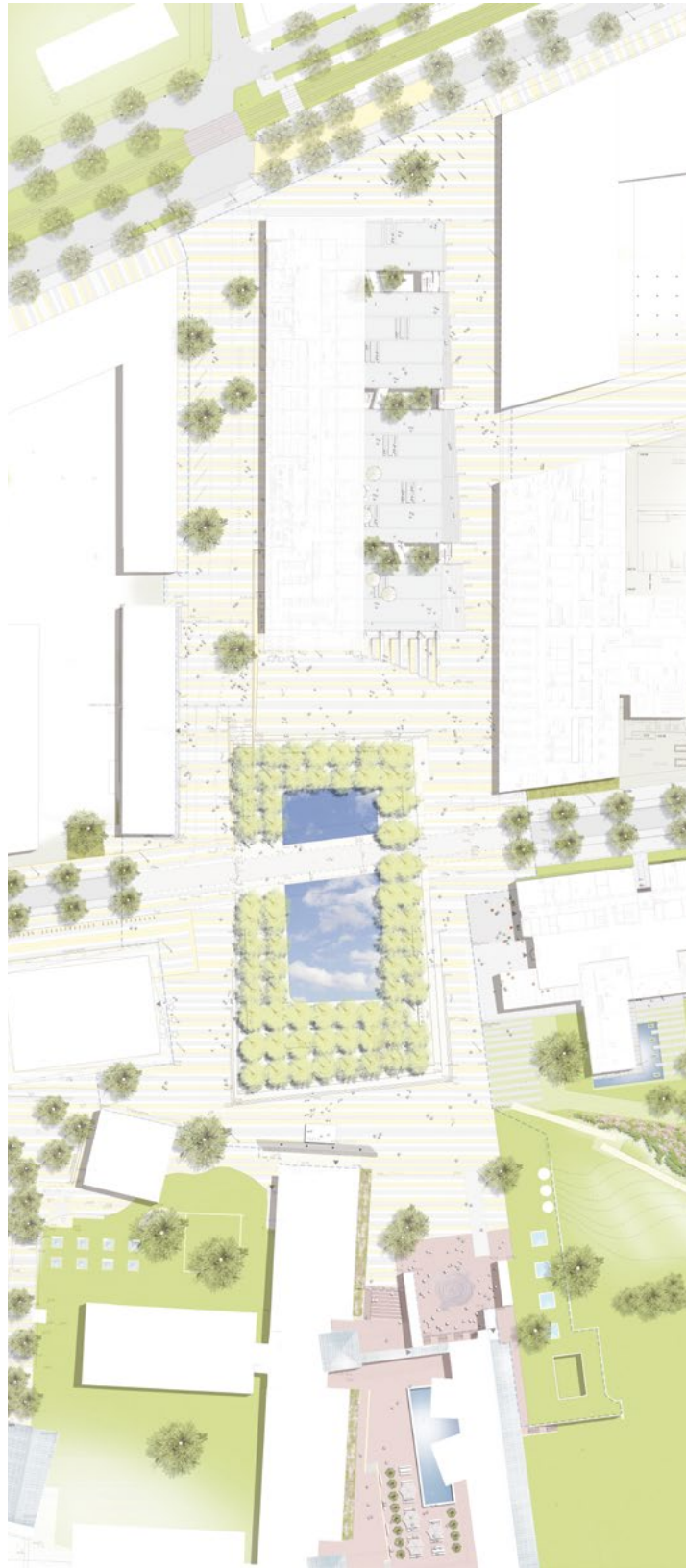
Jarrestraße 80  
22303 Hamburg  
Germany

Telephone +49 (0) 40 2 78 41-0  
Telefax +49 (0) 40 270 66 68  
hamburg@wes-la.de

FOR MORE INFORMATION AND PRESS MATERIAL

Telephone +49 (0) 40 2 78 41-153  
Telefax +49 (0) 40 270 66 68  
pr@wes-la.de

*Project Images*



CONTACT

Jarrestraße 80  
22303 Hamburg  
Germany

Telephone +49 (0) 40 2 78 41-0  
Telefax +49 (0) 40 270 66 68  
hamburg@wes-la.de

FOR MORE INFORMATION AND PRESS MATERIAL

Telephone +49 (0) 40 2 78 41-153  
Telefax +49 (0) 40 270 66 68  
pr@wes-la.de



Project Images



CONTACT

Jarrestraße 80  
22303 Hamburg  
Germany

Telephone +49 (0) 40 2 78 41-0  
Telefax +49 (0) 40 270 66 68  
hamburg@wes-la.de

FOR MORE INFORMATION AND PRESS MATERIAL

Telephone +49 (0) 40 2 78 41-153  
Telefax +49 (0) 40 270 66 68  
pr@wes-la.de

## *Legal notice*

WES GmbH  
LandschaftsArchitektur (LandscapeArchitecture)

Managing Shareholders:

Peter Schatz  
Wolfgang Betz  
Michael Kaschke  
Henrike Wehberg-Krafft  
Claus Rödding

District court Hamburg HRB 100420

Person responsible for content according to  
§ 55 Abs. 2 RStV: Wolfgang Betz (address as above)

The rules of professional conduct are specified in:

- (1) Chamber of Construction Law Hamburg  
(BauKaG HH)
- (2) Implementing regulations for Chamber of  
Construction Law (DVO BauKaG HH)
- (3) Main statute of Hamburg Chamber of Architects

The professional regulations can be viewed and  
accessed via the website of the Hamburg Chamber of  
Architects [www.akhh.de](http://www.akhh.de) / Section: Recht (legal issues).

The legal occupational title "Landschaftsarchitekt"  
(landscape architect) was awarded to WES & Partner  
GbR in Germany following their entry in the list of archi-  
tects of the Hamburg Chamber of Architects.

Hamburgische Architektenkammer  
(Hamburg Chamber of Architects)  
Grindelhof 40  
20146 Hamburg  
Telephone: +49 (0)40 441841-0  
Telefax: +49 (0)40 441841-44  
[info@akhh.de](mailto:info@akhh.de)  
[www.akhh.de](http://www.akhh.de)

## *Copyright*

The contents and works produced by the site operator  
are subject to German copyright laws. The duplication,  
editing, distribution and any kind of use beyond what  
is permitted by the copyright laws requires written  
authorisation from the respective author or content  
creator.

## *Image rights*

WES GmbH LandscapeArchitecture owns the unlimi-  
ted usage rights and non-exclusive rights for all of the  
image material that appears in this document.

In the context of the use of the external image material  
we are exempt from any claims by third parties. WES  
GmbH LandscapeArchitecture is not liable for images  
provided by the project partners.

By providing image material, the project partners  
avouch that they have unrestricted use of the image  
material, that it is not subject to rights by third parties,  
the persons pictured consent to the publication and  
that no fees must be paid for this.

## *Links to photographers*

Photos + Site plan + Sketches + Renderings:  
WES LandschaftsArchitektur  
[www.wes-la.de](http://www.wes-la.de)

## CONTACT

Jarrestraße 80  
22303 Hamburg  
Germany

Telephone +49 (0) 40 2 78 41-0  
Telefax +49 (0) 40 270 66 68  
[hamburg@wes-la.de](mailto:hamburg@wes-la.de)

## FOR MORE INFORMATION AND PRESS MATERIAL

Telephone +49 (0) 40 2 78 41-153  
Telefax +49 (0) 40 270 66 68  
[pr@wes-la.de](mailto:pr@wes-la.de)