



Altmarkt, Dresden

INNER-CITY "STAGE"

Concept

The redesign of the Altmarkt, Dresden's oldest square, was subject to a multifaceted and complex requirement profile: the integration of a tram stop and an underground parking facility with 468 parking spaces into the area of the square, as well as the restructuring of the adjacent pedestrian areas. An urban, representative and multifunctional town plaza has emerged – an inner city "stage" with a high quality of stay.

The design concept has been consistently attuned to fit the changeful history of the plaza. Five water basins, in which the brightly-lit arcades are reflected, mark what was originally the historic border of the Altmarkt square. The natural stone blocks, which each have a relief worked into the upper side, make an appealing sculptural volume, even without water.

Publications

Brochure **„Dresden. Altmarkt. Lebendiger Stadtplatz mit Vergangenheit, Gegenwart und Zukunft“**
Publisher: Landeshauptstadt Dresden – Die Oberbürgermeisterin
10.2009

Book **Urban Spaces: Architecture and Landscape Architecture**
Author: Jürgen Knirsch
Alexander Koch Publisher, 2004

Trade journal „Bauwelt“ **Platzgestaltung Altmarkt**
Bauverlag BV GmbH, 26.05.2006

Client

SACHSEN BAU GMBH & CO. KG, DRESDEN
THE PROVINCIAL CAPITAL OF DRESDEN

Project period

2000-2009

Size

25,300 m²

Type

PUBLIC SPACES & SQUARES

Location

DRESDEN, GERMANY

Competition

1. PRIZE „NEW ARRANGEMENT OF ALTMARKT DRESDEN“, 2000

Realisation

WES & PARTNER

CONTACT

Jarrestraße 80
22303 Hamburg
Germany

Telephone +49 (0) 40 2 78 41-0
Telefax +49 (0) 40 270 66 68
hamburg@wes-la.de

FOR MORE INFORMATION AND PRESS MATERIAL

Telephone +49 (0) 40 2 78 41-153
Telefax +49 (0) 40 270 66 68
pr@wes-la.de

Project Images



CONTACT

Jarrestraße 80
22303 Hamburg
Germany

Telephone +49 (0) 40 2 78 41-0
Telefax +49 (0) 40 270 66 68
hamburg@wes-la.de

FOR MORE INFORMATION AND PRESS MATERIAL

Telephone +49 (0) 40 2 78 41-153
Telefax +49 (0) 40 270 66 68
pr@wes-la.de

Project Images



CONTACT

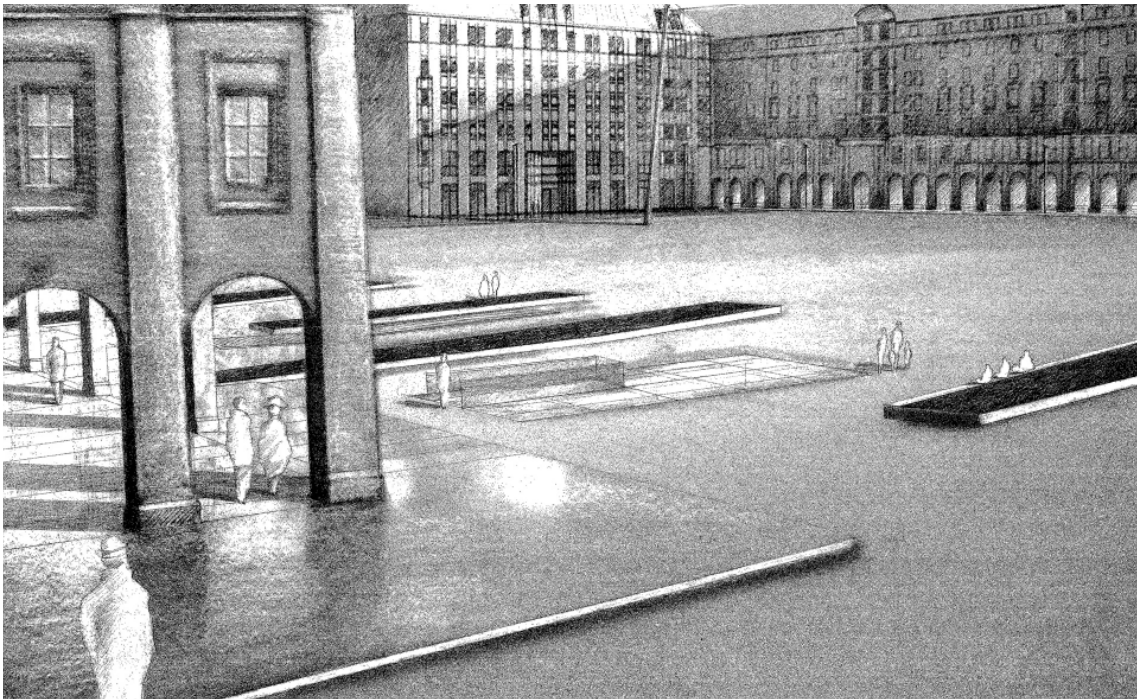
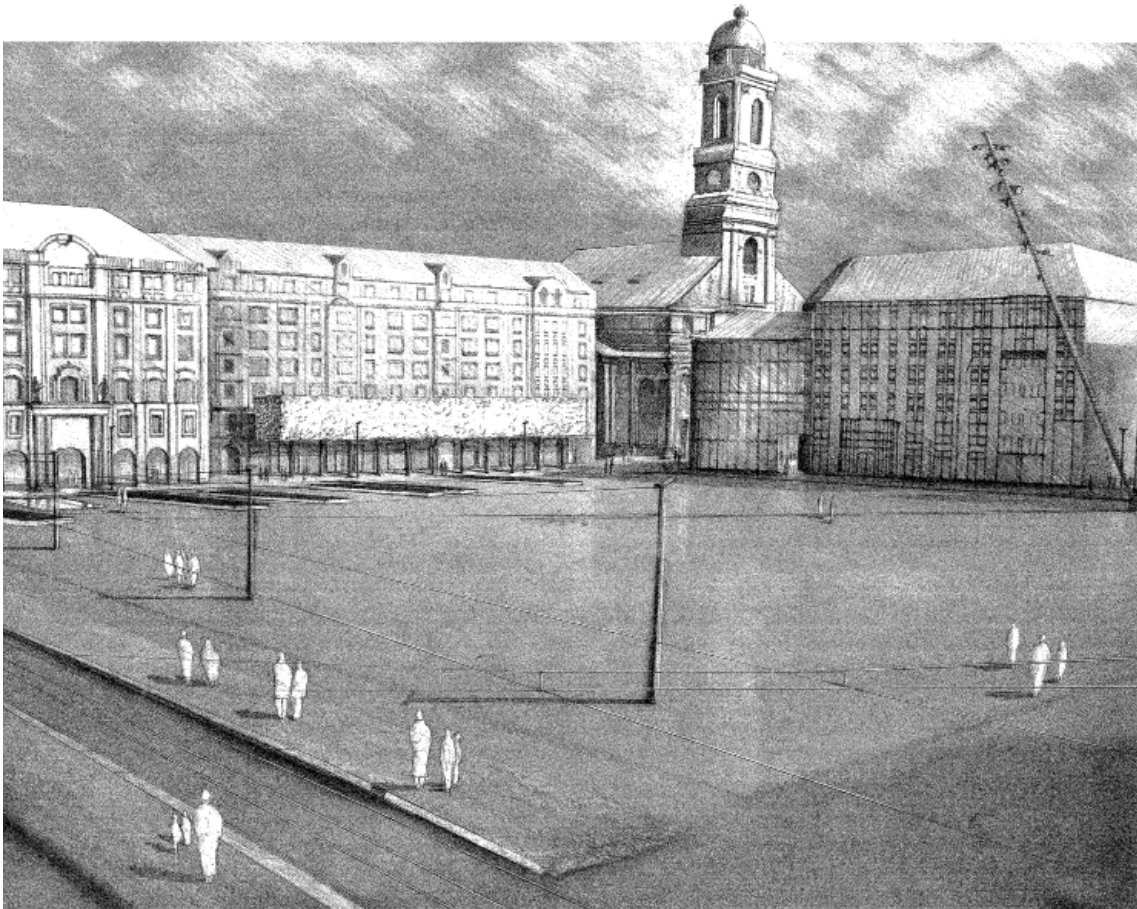
Jarrestraße 80
22303 Hamburg
Germany

Telephone +49 (0) 40 2 78 41-0
Telefax +49 (0) 40 270 66 68
hamburg@wes-la.de

FOR MORE INFORMATION AND PRESS MATERIAL

Telephone +49 (0) 40 2 78 41-153
Telefax +49 (0) 40 270 66 68
pr@wes-la.de

Project Images



CONTACT

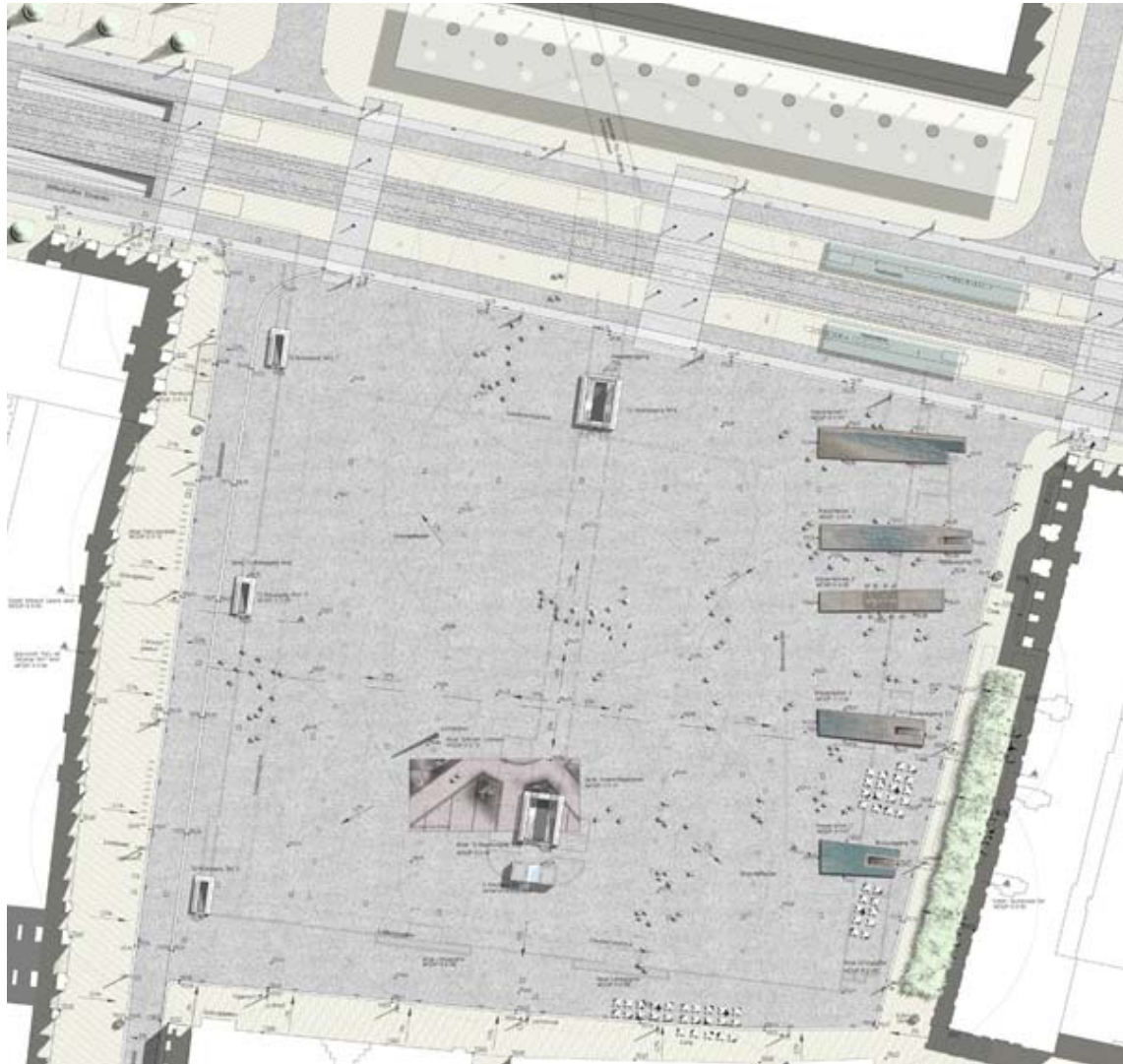
Jarrestraße 80
22303 Hamburg
Germany

Telephone +49 (0) 40 2 78 41-0
Telefax +49 (0) 40 270 66 68
hamburg@wes-la.de

FOR MORE INFORMATION AND PRESS MATERIAL

Telephone +49 (0) 40 2 78 41-153
Telefax +49 (0) 40 270 66 68
pr@wes-la.de

Project Images



CONTACT

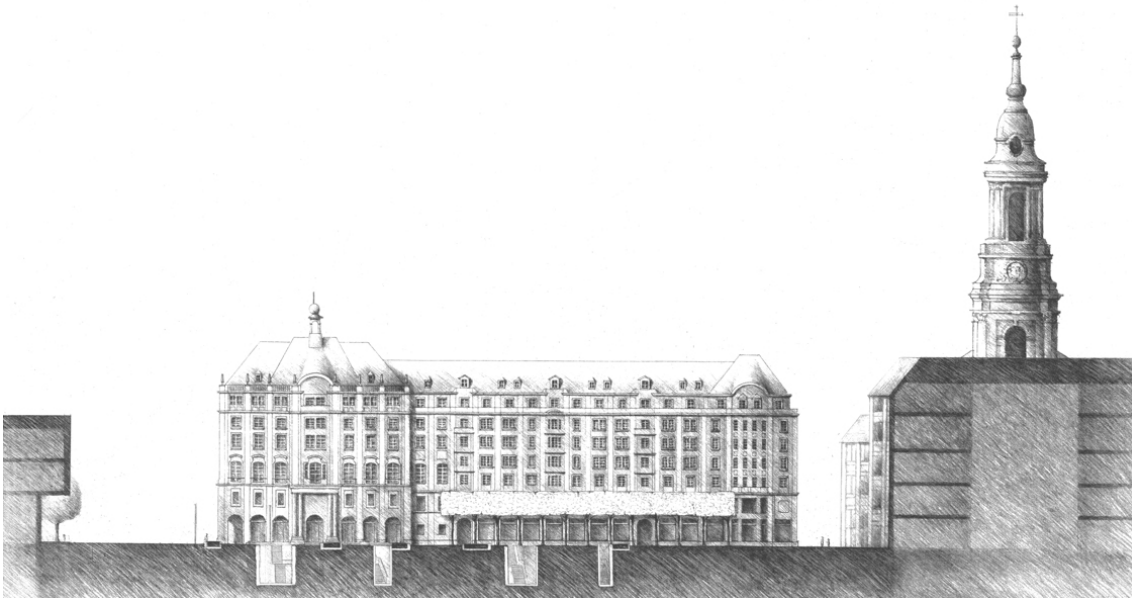
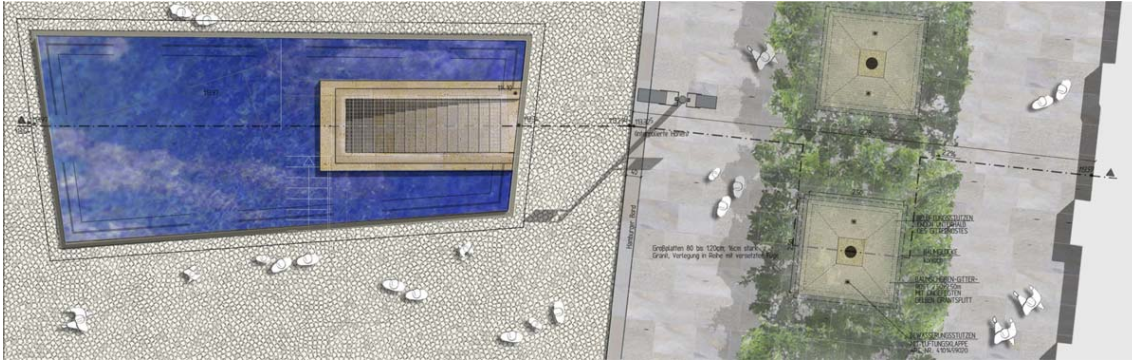
Jarrestraße 80
22303 Hamburg
Germany

Telephone +49 (0) 40 2 78 41-0
Telefax +49 (0) 40 270 66 68
hamburg@wes-la.de

FOR MORE INFORMATION AND PRESS MATERIAL

Telephone +49 (0) 40 2 78 41-153
Telefax +49 (0) 40 270 66 68
pr@wes-la.de

Project Images



CONTACT

Jarrestraße 80
22303 Hamburg
Germany

Telephone +49 (0) 40 2 78 41-0
Telefax +49 (0) 40 270 66 68
hamburg@wes-la.de

FOR MORE INFORMATION AND PRESS MATERIAL

Telephone +49 (0) 40 2 78 41-153
Telefax +49 (0) 40 270 66 68
pr@wes-la.de

Legal notice

WES GmbH
LandschaftsArchitektur (LandscapeArchitecture)

Managing Shareholders:
Peter Schatz
Wolfgang Betz
Michael Kaschke
Henrike Wehberg-Krafft

Managing Director:
Claus Rödding

District court Hamburg HRB 100420

Person responsible for content according to
§ 55 Abs. 2 RStV: Wolfgang Betz (address as above)

The rules of professional conduct are specified in:
(1) Chamber of Construction Law Hamburg
(BauKaG HH)
(2) Implementing regulations for Chamber of
Construction Law (DVO BauKaG HH)
(3) Main statute of Hamburg Chamber of Architects

The professional regulations can be viewed and
accessed via the website of the Hamburg Chamber of
Architects www.akhh.de / Section: Recht (legal issues).

The legal occupational title "Landschaftsarchitekt"
(landscape architect) was awarded to WES & Partner
GbR in Germany following their entry in the list of ar-
chitects of the Hamburg Chamber of Architects.

Hamburgische Architektenkammer
(Hamburg Chamber of Architects)
Grindelhof 40
20146 Hamburg
Telephone: +49 (0)40 441841-0
Telefax: +49 (0)40 441841-44
info@akhh.de
www.akhh.de

Copyright

The contents and works produced by the site operator
are subject to German copyright laws. The duplication,
editing, distribution and any kind of use beyond what
is permitted by the copyright laws requires written
authorisation from the respective author or content
creator.

Image rights

WES GmbH LandscapeArchitecture owns the unlimi-
ted usage rights and non-exclusive rights for all of the
image material that appears in this document.

In the context of the use of the external image material
we are exempt from any claims by third parties. WES
GmbH LandscapeArchitecture is not liable for images
provided by the project partners.

By providing image material, the project partners
avouch that they have unrestricted use of the image
material, that it is not subject to rights by third parties,
the persons pictured consent to the publication and
that no fees must be paid for this.

Links to photographers

Alexander Paul Brandes
www.alexanderpaulbrandes.com

Sketches: Michael Rink

Photos + sketches: WES LandschaftsArchitektur
www.wes-la.de

CONTACT

Jarrestraße 80
22303 Hamburg
Germany

Telephone +49 (0) 40 2 78 41-0
Telefax +49 (0) 40 270 66 68
hamburg@wes-la.de

FOR MORE INFORMATION AND PRESS MATERIAL

Telephone +49 (0) 40 2 78 41-153
Telefax +49 (0) 40 270 66 68
pr@wes-la.de