



New building for EAM head office, Kassel

GREEN VIEWS

Concept

A generous, landscaped exterior design merges the work and office spaces of the administration building with the surrounding landscape. This integration allows the large building to blend seamlessly into the heterogeneous urban context.

A light, transparent building structure in the form of individual office blocks gives rise to three inner courtyards. Here, the theme of water has been interpreted in different ways and the water surfaces have variable end points. The employees have an unobstructed view of the courtyards, the water and the surrounding nature all the year round, which creates a high-quality workplace. A meeting room merges into the water and the canteen has a terrace by the pond. The permeability of the interior and exterior spaces promotes communication and exchange between employees and guests.

In the south of the area, the rising office wings protrude into spacious, park-like green spaces. Central facilities and the reception are located in a part of the building facing the street and can be reached via a representative, wide access road. A tree-lined bastion at the corner of the property flanks the access road and signals the entrance from a distance.

Client

ELEKTRIZITÄTS AG MITTELDEUTSCHLAND

Project period

1989 - 1993

Size

43.260 m²

Type

SERVICE & ADMINISTRATION

Location

GERMANY

Realisation

WLES WEHBERG LANGE EPPINGER SCHMITDKÉ

Partner

BIELING - BIELING, HAMBURG

GMP VON GERKAN, MARG + PARTNER, HAMBURG

CONTACT

Jarrestraße 80
22303 Hamburg
Germany

Telephone +49 (0) 40 2 78 41-0
Telefax +49 (0) 40 270 66 68
hamburg@wes-la.de

FOR MORE INFORMATION AND PRESS MATERIAL

Telephone +49 (0) 40 2 78 41-153
Telefax +49 (0) 40 270 66 68
pr@wes-la.de

Project Images



CONTACT

Jarrestraße 80
22303 Hamburg
Germany

Telephone +49 (0) 40 2 78 41-0
Telefax +49 (0) 40 270 66 68
hamburg@wes-la.de

FOR MORE INFORMATION AND PRESS MATERIAL

Telephone +49 (0) 40 2 78 41-153
Telefax +49 (0) 40 270 66 68
pr@wes-la.de

Project Images



CONTACT

Jarrestraße 80
22303 Hamburg
Germany

Telephone +49 (0) 40 2 78 41-0
Telefax +49 (0) 40 270 66 68
hamburg@wes-la.de

FOR MORE INFORMATION AND PRESS MATERIAL

Telephone +49 (0) 40 2 78 41-153
Telefax +49 (0) 40 270 66 68
pr@wes-la.de

Project Images



CONTACT

Jarrestraße 80
22303 Hamburg
Germany

Telephone +49 (0) 40 2 78 41-0
Telefax +49 (0) 40 270 66 68
hamburg@wes-la.de

FOR MORE INFORMATION AND PRESS MATERIAL

Telephone +49 (0) 40 2 78 41-153
Telefax +49 (0) 40 270 66 68
pr@wes-la.de

Project Images



CONTACT

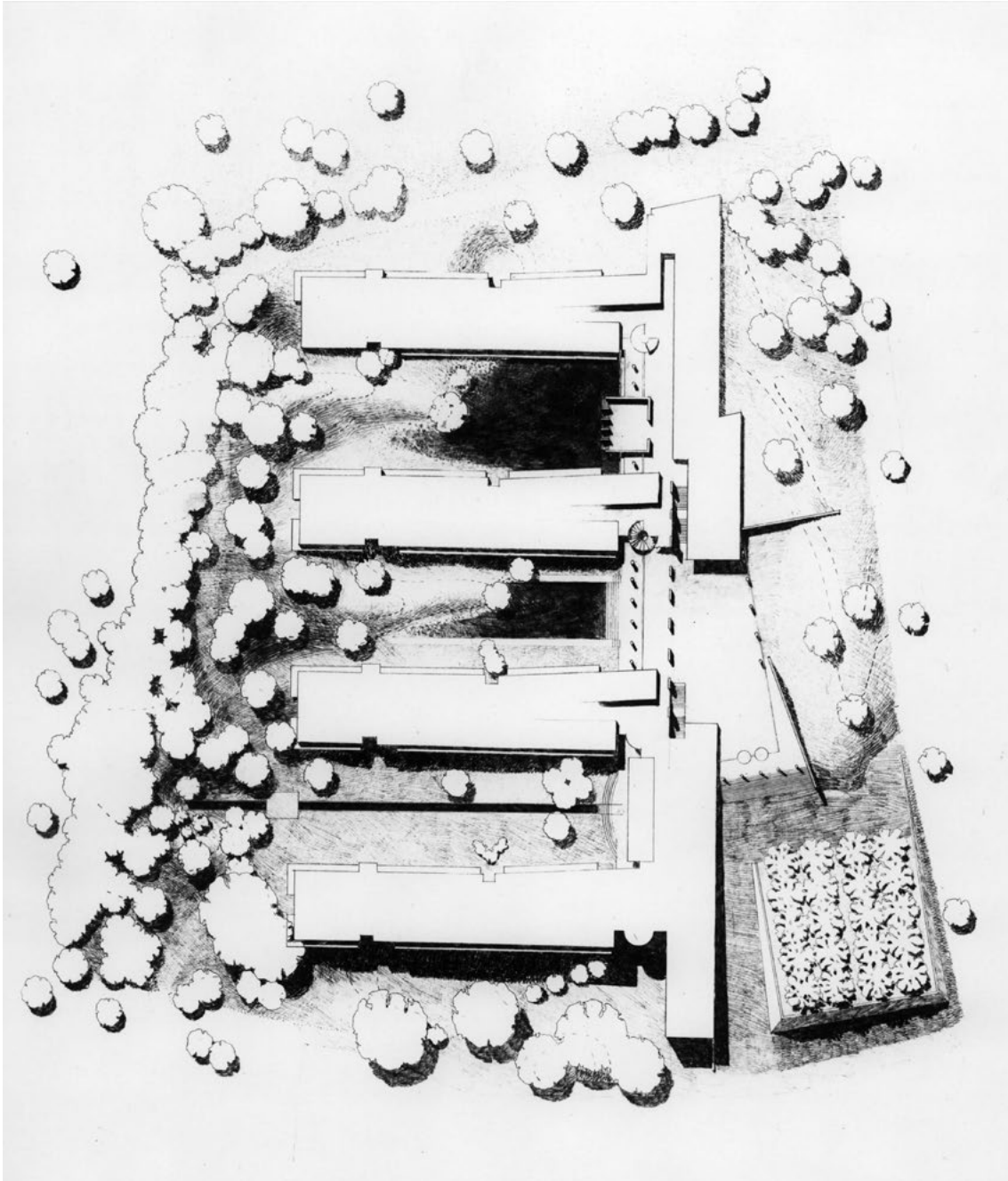
Jarrestraße 80
22303 Hamburg
Germany

Telephone +49 (0) 40 2 78 41-0
Telefax +49 (0) 40 270 66 68
hamburg@wes-la.de

FOR MORE INFORMATION AND PRESS MATERIAL

Telephone +49 (0) 40 2 78 41-153
Telefax +49 (0) 40 270 66 68
pr@wes-la.de

Project Images



CONTACT

Jarrestraße 80
22303 Hamburg
Germany

Telephone +49 (0) 40 2 78 41-0
Telefax +49 (0) 40 270 66 68
hamburg@wes-la.de

FOR MORE INFORMATION AND PRESS MATERIAL

Telephone +49 (0) 40 2 78 41-153
Telefax +49 (0) 40 270 66 68
pr@wes-la.de

Legal notice

WES GmbH
LandschaftsArchitektur (LandscapeArchitecture)

Managing Shareholders:

Peter Schatz
Wolfgang Betz
Michael Kaschke
Henrike Wehberg-Krafft
Claus Rödding

District court Hamburg HRB 100420

Person responsible for content according to
§ 55 Abs. 2 RStV: Wolfgang Betz (address as above)

The rules of professional conduct are specified in:

- (1) Chamber of Construction Law Hamburg
(BauKaG HH)
- (2) Implementing regulations for Chamber of
Construction Law (DVO BauKaG HH)
- (3) Main statute of Hamburg Chamber of Architects

The professional regulations can be viewed and
accessed via the website of the Hamburg Chamber of
Architects www.akhh.de / Section: Recht (legal issues).

The legal occupational title "Landschaftsarchitekt"
(landscape architect) was awarded to WES & Partner
GbR in Germany following their entry in the list of ar-
chitects of the Hamburg Chamber of Architects.

Hamburgische Architektenkammer
(Hamburg Chamber of Architects)
Grindelhof 40
20146 Hamburg
Telephone: +49 (0)40 441841-0
Telefax: +49 (0)40 441841-44
info@akhh.de
www.akhh.de

Copyright

The contents and works produced by the site operator
are subject to German copyright laws. The duplication,
editing, distribution and any kind of use beyond what
is permitted by the copyright laws requires written
authorisation from the respective author or content
creator.

Image rights

WES GmbH LandscapeArchitecture owns the unlimi-
ted usage rights and non-exclusive rights for all of the
image material that appears in this document.

In the context of the use of the external image material
we are exempt from any claims by third parties. WES
GmbH LandscapeArchitecture is not liable for images
provided by the project partners.

By providing image material, the project partners
avouch that they have unrestricted use of the image
material, that it is not subject to rights by third parties,
the persons pictured consent to the publication and
that no fees must be paid for this.

Links to photographers

Siteplan:
WES LandscapeArchitecture
www.wes-la.de

Photos:
WES LandscapeArchitecture
Claus Prinz

CONTACT

Jarrestraße 80
22303 Hamburg
Germany

Telephone +49 (0) 40 2 78 41-0
Telefax +49 (0) 40 270 66 68
hamburg@wes-la.de

FOR MORE INFORMATION AND PRESS MATERIAL

Telephone +49 (0) 40 2 78 41-153
Telefax +49 (0) 40 270 66 68
pr@wes-la.de