



Jungfernstieg, Hamburg

PRESENTING A VIEW

Concept

The jury of the international competition held by the city of Hamburg commented on our draft as follows: "The proposal is clear and simple, yet also sophisticated: the Alster jetty will be replaced by a spacious stairway, which takes up the whole width of the Jungfernstieg, extends down as far as the water and provides a wide range of movable seating possibilities. In contrast to the flat flight of steps, the Jungfernstieg will once again be given a clearly outlined, triaxial avenue of linden trees on the side by the lake, hence continuing the promenade around the Binnenalster (Inner Alster Lake), yet due to the box-like shape of the trees and the gap that has been left, also discretely highlighting it, allowing for a permanent partial view of the facades behind. With these few, yet significant interventions, it is possible, using unpretentious means, to give the Jungfernstieg a clear structure, dividing it into a boulevard on the building side, a large promenade on the lake side and a recreational and seating area towards the jetty. (WES) has succeeded in not only creating a continuation of the historic structuring of the Jungfernstieg, but also a new image of natural and unobtrusive beauty."

Client

CITY OF HAMBURG

ASSOCIATION „LEBENDIGER JUNGFERNSTIEG E.V.“,
HAMBURG

Project period

1998

Size

37,500 m²

Type

PUBLIC SPACES & SQUARES

Location

HAMBURG, GERMANY

Competition

1. PRIZE „IDEENWETTBEWERB ZUR NEUGESTALTUNG DES JUNGFERNSTIEG“, 2002

Realisation

WES & PARTNER

Partner

ANDRÉ POITIERS ARCHITEKT GMBH, HAMBURG

CONTACT

Jarrestraße 80
22303 Hamburg
Germany

Telephone +49 (0) 40 2 78 41-0
Telefax +49 (0) 40 270 66 68
hamburg@wes-la.de

FOR MORE INFORMATION AND PRESS MATERIAL

Telephone +49 (0) 40 2 78 41-153
Telefax +49 (0) 40 270 66 68
pr@wes-la.de

Publications

Book **BDA Hamburg Architecture Prize 2008**

Editors: Hildegard Kösters, Volker Roscher
Dölling + Galitz Publishers, 2008

Daily newspaper „FAZ“ **Hier ist man Bürger**

Author: Erwin Seitz
F.A.Z.-Publishers, 06.08.2007

Trade journal „Bauwelt“ **City, Stairs, Alster**

Author: Heinrich Wähning
Bauwelt Publishers, 2006

Book **Architecture in Hamburg – Yearbook 2006**

Author: Hamburg Chamber of Architects
Junius Publishers, 2006

Book **The Jungfernstieg. Yesterday-today-tomorrow**

Author: Dorothee Engel
Die Hanse Publishers, 2003

Awards

3. prize Architecture Prize 2008

Association of German Architects (BDA) Hamburg, 2008

Recognition Best German Landscape Architects

Made in Germany: Best Contemporary Architecture, 2007

CONTACT

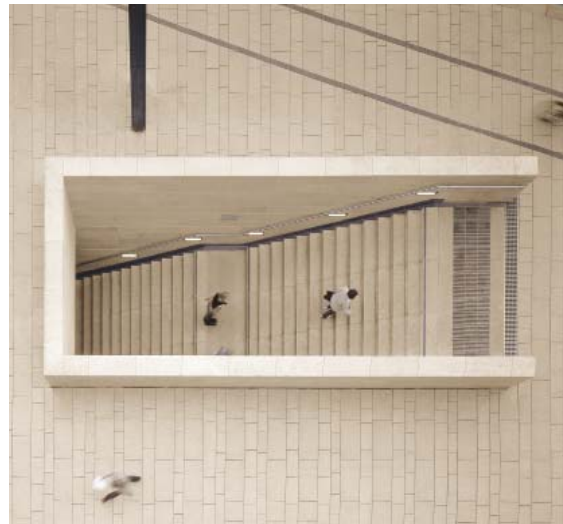
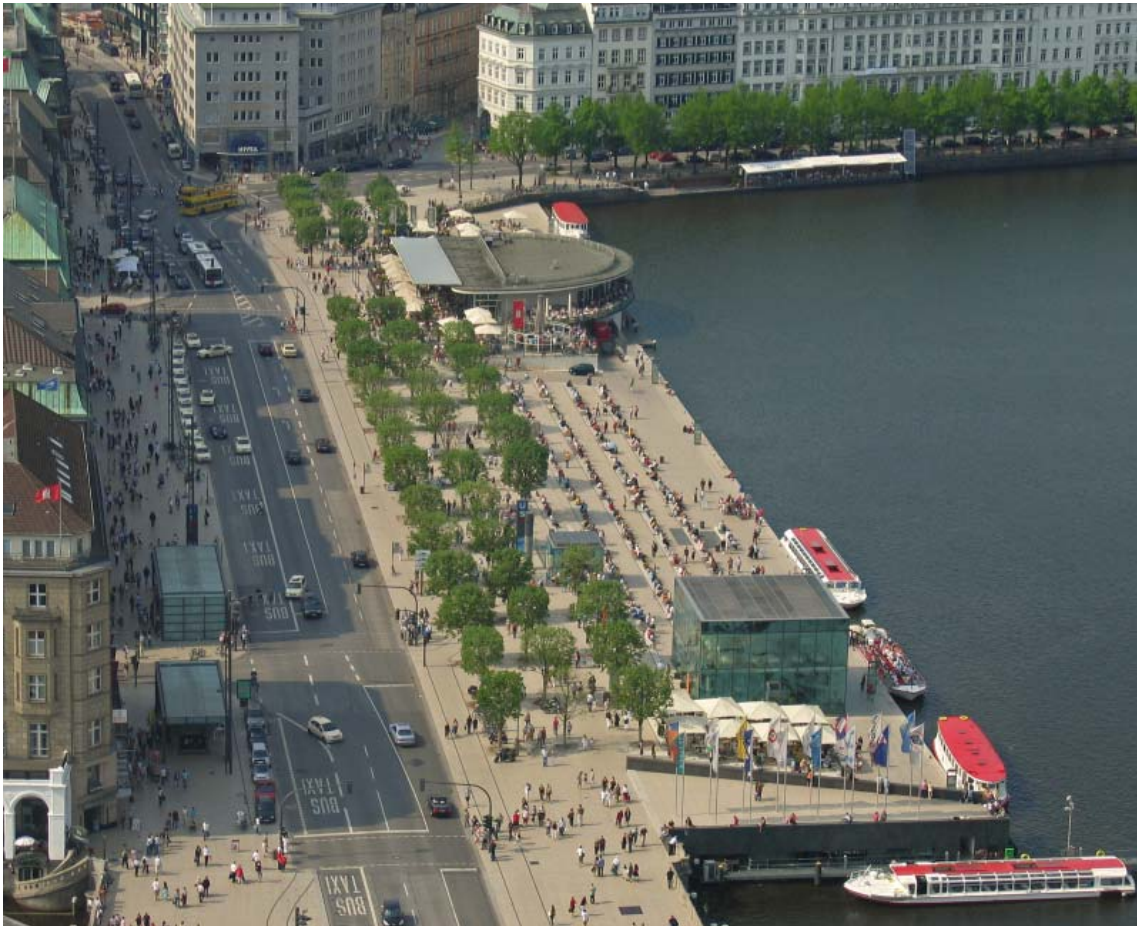
Jarrestraße 80
22303 Hamburg
Germany

Telephone +49 (0) 40 2 78 41-0
Telefax +49 (0) 40 270 66 68
hamburg@wes-la.de

FOR MORE INFORMATION AND PRESS MATERIAL

Telephone +49 (0) 40 2 78 41-153
Telefax +49 (0) 40 270 66 68
pr@wes-la.de

Project Images



CONTACT

Jarrestraße 80
22303 Hamburg
Germany

Telephone +49 (0) 40 2 78 41-0
Telefax +49 (0) 40 270 66 68
hamburg@wes-la.de

FOR MORE INFORMATION AND PRESS MATERIAL

Telephone +49 (0) 40 2 78 41-153
Telefax +49 (0) 40 270 66 68
pr@wes-la.de

Project Images



CONTACT

Jarrestraße 80
22303 Hamburg
Germany

Telephone +49 (0) 40 2 78 41-0
Telefax +49 (0) 40 270 66 68
hamburg@wes-la.de

FOR MORE INFORMATION AND PRESS MATERIAL

Telephone +49 (0) 40 2 78 41-153
Telefax +49 (0) 40 270 66 68
pr@wes-la.de

Project Images



CONTACT

Jarrestraße 80
22303 Hamburg
Germany

Telephone +49 (0) 40 2 78 41-0
Telefax +49 (0) 40 270 66 68
hamburg@wes-la.de

FOR MORE INFORMATION AND PRESS MATERIAL

Telephone +49 (0) 40 2 78 41-153
Telefax +49 (0) 40 270 66 68
pr@wes-la.de

Project Images



CONTACT

Jarrestraße 80
22303 Hamburg
Germany

Telephone +49 (0) 40 2 78 41-0
Telefax +49 (0) 40 270 66 68
hamburg@wes-la.de

FOR MORE INFORMATION AND PRESS MATERIAL

Telephone +49 (0) 40 2 78 41-153
Telefax +49 (0) 40 270 66 68
pr@wes-la.de

Legal notice

WES GmbH
LandschaftsArchitektur (LandscapeArchitecture)

Managing Shareholders:
Peter Schatz
Wolfgang Betz
Michael Kaschke
Henrike Wehberg-Krafft

Managing Director:
Claus Rödding

District court Hamburg HRB 100420

Person responsible for content according to
§ 55 Abs. 2 RStV: Wolfgang Betz (address as above)

The rules of professional conduct are specified in:

- (1) Chamber of Construction Law Hamburg
(BauKaG HH)
- (2) Implementing regulations for Chamber of
Construction Law (DVO BauKaG HH)
- (3) Main statute of Hamburg Chamber of Architects

The professional regulations can be viewed and
accessed via the website of the Hamburg Chamber of
Architects www.akhh.de / Section: Recht (legal issues).

The legal occupational title "Landschaftsarchitekt"
(landscape architect) was awarded to WES & Partner
GbR in Germany following their entry in the list of ar-
chitects of the Hamburg Chamber of Architects.

Hamburgische Architektenkammer
(Hamburg Chamber of Architects)
Grindelhof 40
20146 Hamburg
Telephone: +49 (0)40 441841-0
Telefax: +49 (0)40 441841-44
info@akhh.de
www.akhh.de

Copyright

The contents and works produced by the site operator
are subject to German copyright laws. The duplication,
editing, distribution and any kind of use beyond what
is permitted by the copyright laws requires written
authorisation from the respective author or content
creator.

Image rights

WES GmbH LandscapeArchitecture owns the unlimi-
ted usage rights and non-exclusive rights for all of the
image material that appears in this document.

In the context of the use of the external image material
we are exempt from any claims by third parties. WES
GmbH LandscapeArchitecture is not liable for images
provided by the project partners.

By providing image material, the project partners
avouch that they have unrestricted use of the image
material, that it is not subject to rights by third parties,
the persons pictured consent to the publication and
that no fees must be paid for this.

Links to photographers

Jörn Hustedt | HUSTEDTnetwork Fotografie
www.hustedtnetwork.de

Renderings: Peter Wels | Zeichner
www.peterwels.de

CONTACT

Jarrestraße 80
22303 Hamburg
Germany

Telephone +49 (0) 40 2 78 41-0
Telefax +49 (0) 40 270 66 68
hamburg@wes-la.de

FOR MORE INFORMATION AND PRESS MATERIAL

Telephone +49 (0) 40 2 78 41-153
Telefax +49 (0) 40 270 66 68
pr@wes-la.de